



## 7/42 Bayswater Road RUSHCUTTERS BAY, NSW

1 bed | 1 bath

**R&W**

An ideal first home or investment with solid rental prospects, this light and airy studio pad offers a quiet position at the rear of the building in 'Palm Court', a classic c.1930 security block of 14. Combining modern essentials with loads of character and scope for further improvements, this studio apartment is part of leafy Bayswater Mews, an ever-popular gated-community consisting of a well maintained collection of strata apartment buildings. Enjoying landscaped privacy with secure dual street access and walk-to-almost-everywhere convenience, this city pad is an ideal entry point to a trendy cosmopolitan locale.

...

[rwebay.com.au/2527929](https://rwebay.com.au/2527929)

Luke McDonnell 0418 844 110

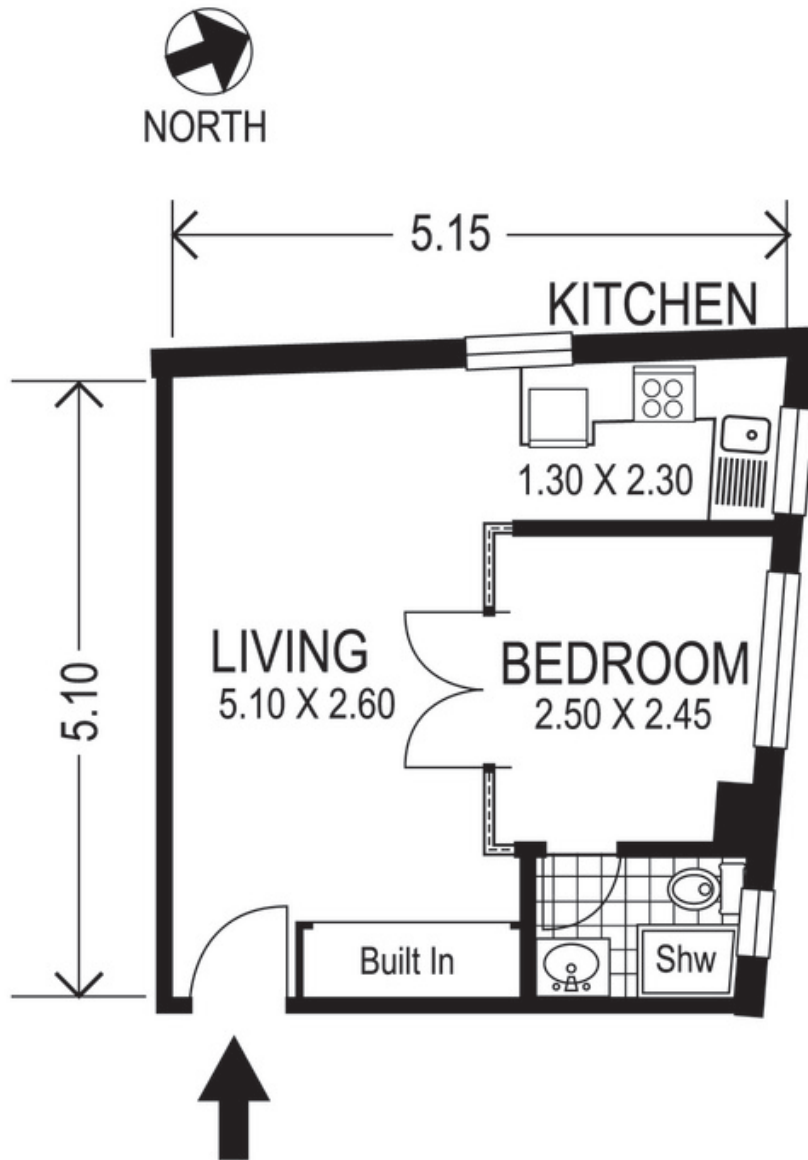
**Proudly Richardson&Wrench**

Richardson & Wrench Elizabeth Bay / Potts Point  
02 8356 2700

**R&W** | The best reputation  
in real estate  
Elizabeth Bay/Potts Point

Contact:  
Luke McDonnell  
0418 844 110

Contact:  
Angelo Bouras  
0401 658 653



7 / 42 Bayswater Road  
RUSHCUTTERS BAY  
*"PALM COURT"*

Plans shown are for presentation purposes only and are not part of any legal document or title and are subject to errors, omissions, inaccuracies and they should not be used as sole and/or accurate reference for purchasing decision. Interested parties should make their own enquiries using other sources supplied. Dimensions shown on the plans are approximate values in length by width. Illustration by Raoul Isidro 04111 28500.