



8/27 Billyard Ave ELIZABETH BAY, NSW

4 bed | 4 bath | 9 car

An extremely rare opportunity, peacefully positioned in Elizabeth Bay's prestigious harbourside dress circle and only footsteps to the foreshore and waterfront parks. This vast penthouse presents a blank canvas of unlimited potential with a sunny north aspect, private swimming pool and magnificent harbour views to The Heads. With a private entrance and level lift access to huge living spaces across 2 levels atop the building, it also features an enormous ground floor area as well as a 9-car garage. With a total strata area of approx. 1224sqm and house-like proportions, it has large rooms opening to wide sun terraces and the pool.

...

R&W

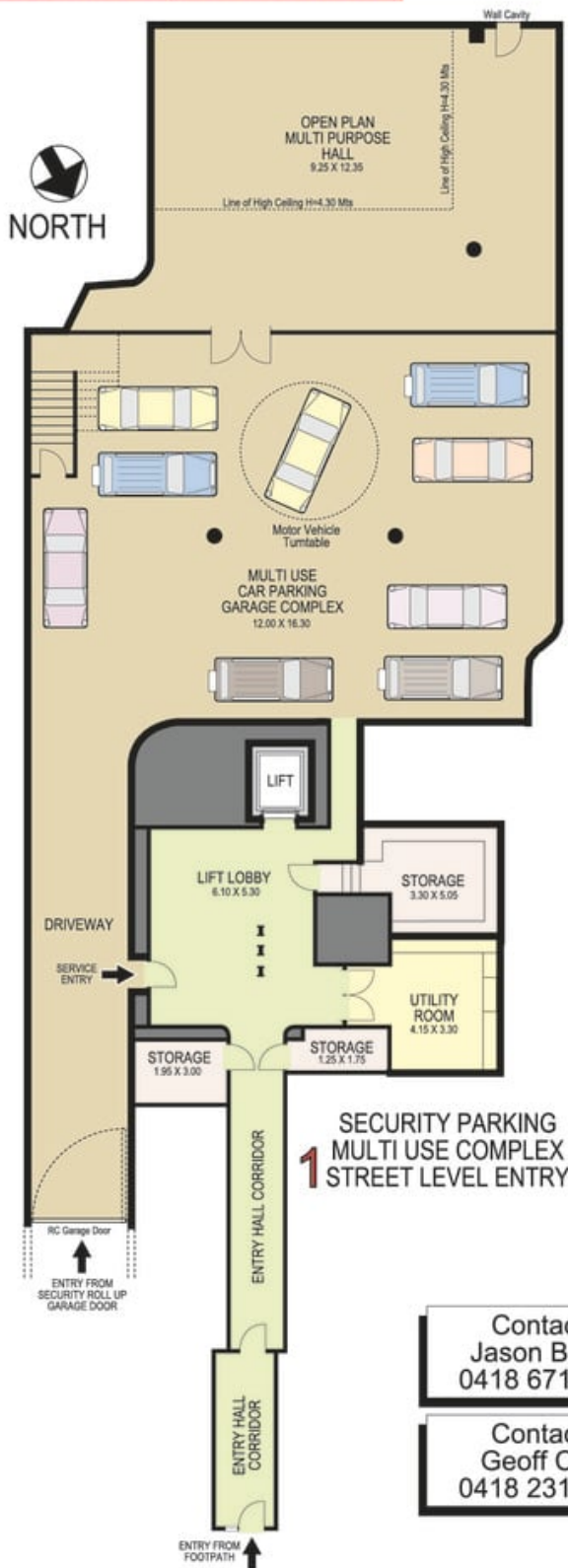
rwebay.com.au/2906380

Jason Boon 0418 671 494

Geoff Cox 0418 231 004

Proudly Richardson&Wrench

Richardson & Wrench Elizabeth Bay / Potts Point
02 8356 2700



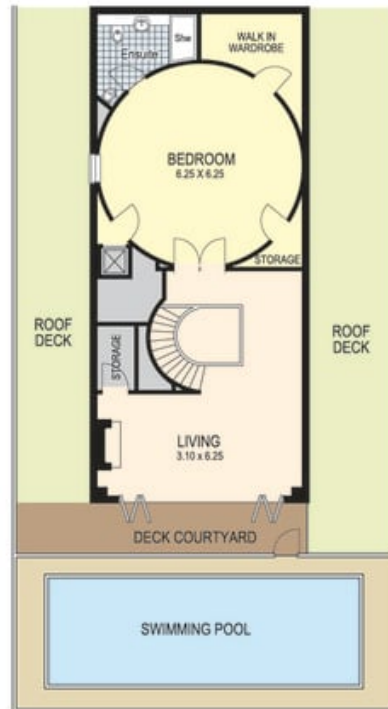
Contact:
Jason Boon
0418 671 494

Contact:
Geoff Cox
0418 231 004

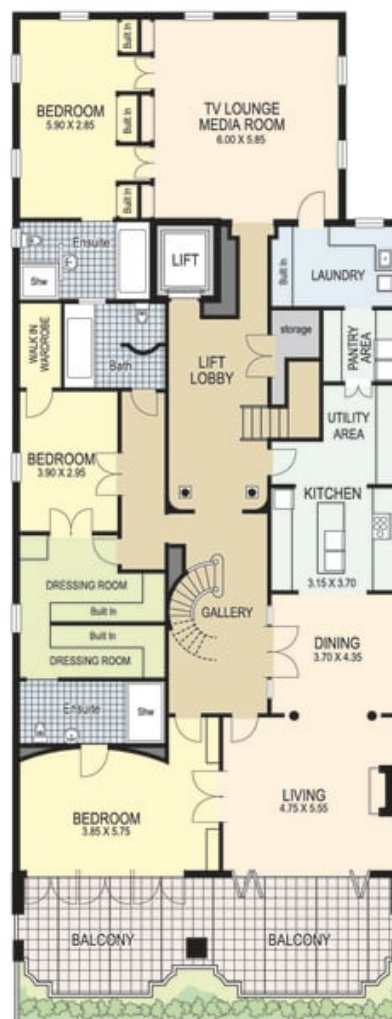
**8 / 27 Billyard Avenue
ELIZABETH BAY**

Plans shown are for presentation purposes only and are not part of any legal document or title and are subject to errors, omissions, inaccuracies and they should not be used as sole and/or accurate reference for purchasing decision. Interested parties should make their own enquiries using other sources supplied. Dimensions shown on the plans are approximate values in length by width. Illustration by Raoul Isidro 04111 28500.

Every precaution has been taken to establish accuracy of the information in this brochure but does not constitute any representation by the vendor or agent.



**3 TOP FLOOR
ROOF DECK & POOL**



2 MAIN LEVEL