

## 234 Dowling Street WOOLLOOMOOLOO, NSW

3 bed | 3 bath | 2 car

**R&W**

With no detail missed in the creation of an exceptional...

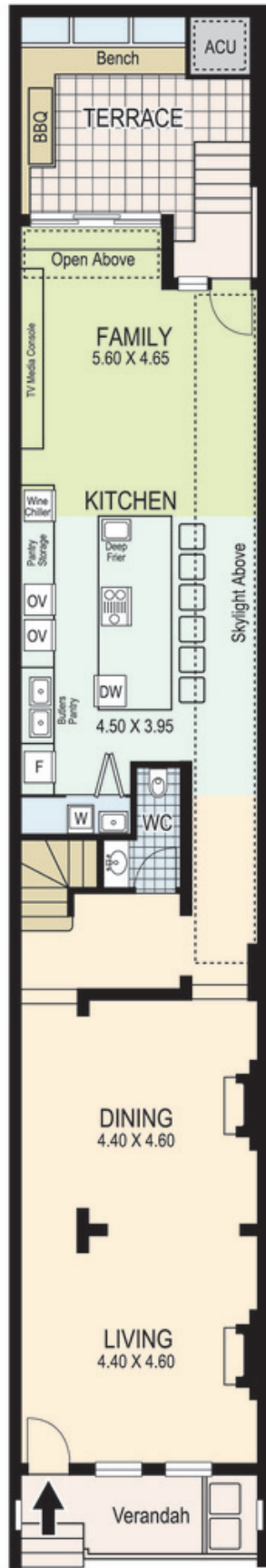
**[rwebay.com.au/3047272](https://rwebay.com.au/3047272)**

Jason Boon 0418 671 494

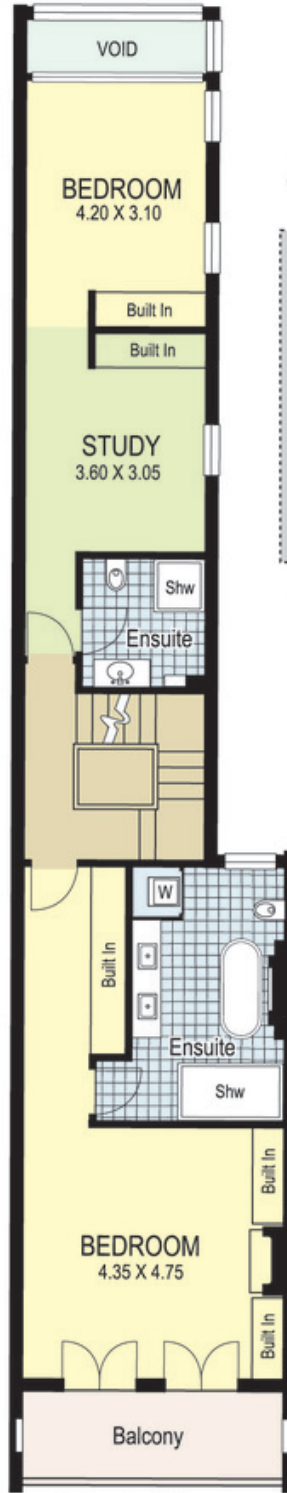
Geoff Cox 0418 231 004

**Proudly Richardson&Wrench**

Richardson & Wrench Elizabeth Bay / Potts Point  
02 8356 2700



Ground Floor



First Floor



Second Floor

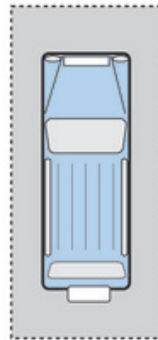
**R&W**

Elizabeth Bay / Potts Point  
8356 2700

Contact:  
Jason Boon  
0418 671 494

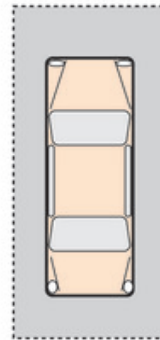
Contact:  
Geoff Cox  
0418 231 004

SECURITY  
CAR PARKING  
SPACE



REFER TO DETAILS  
OF PARKING LAYOUT  
ON STRATA PLAN

SECURITY  
CAR PARKING  
SPACE



REFER TO DETAILS  
OF PARKING LAYOUT  
ON STRATA PLAN

**234 Dowling Street WOOLLOOMOOLOO**

Plans shown are for presentation purposes only and are not part of any legal document or title and are subject to errors, omissions inaccuracies and they should not be used as the sole and/or accurate reference for purchasing decision. Interested parties should make their own inquiries using other sources supplied. Dimensions in length and width are approximate. Illustration by Raoul Isidoro 0411128500

Every precaution has been taken to establish accuracy of the information in this brochure but does not constitute any representation by the vendor or agent.

**R&W**