



5/2 Billyard Avenue ELIZABETH BAY, NSW

2 bed | 1 bath | 1 car

A rarely-offered jewel on Elizabeth Bay, this 2-bedroom...

R&W

rwebay.com.au/3062560

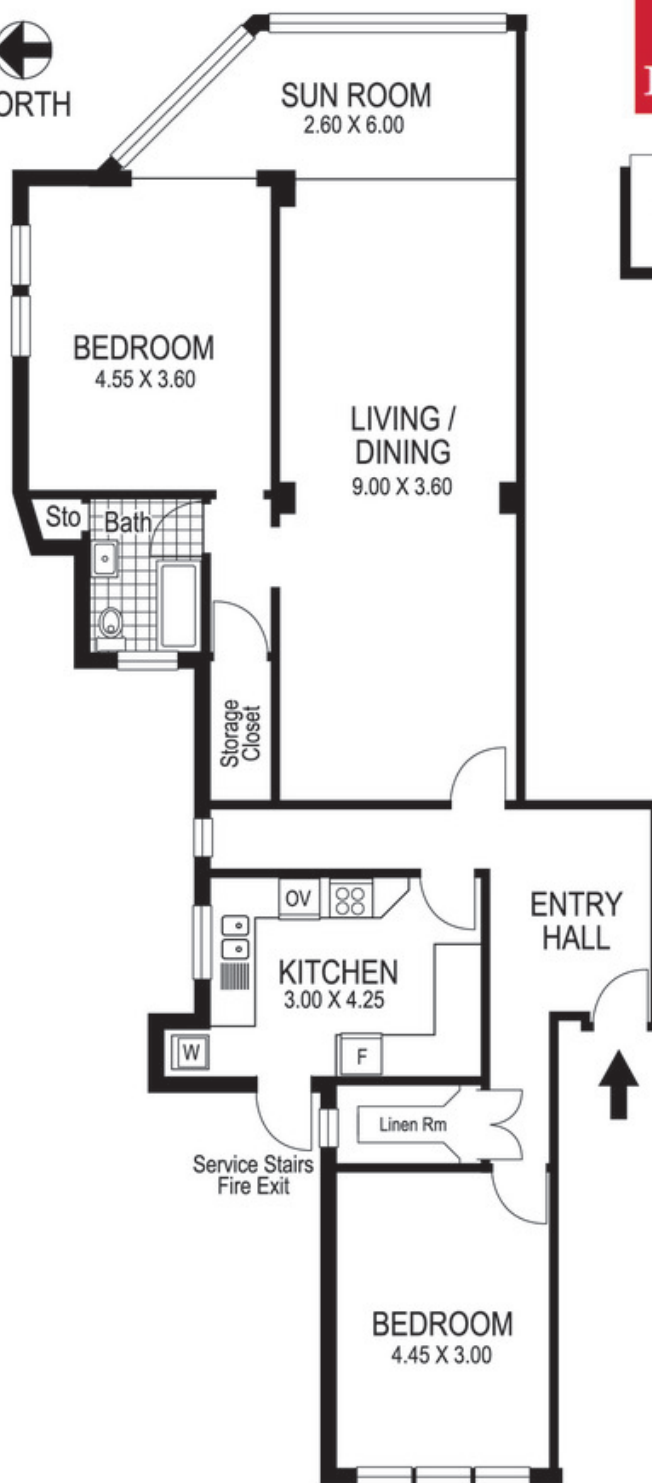
Greg McKinley 0412 044 822

Andrew Hoggett 0412 208 614

Penny Timothy 0418 546 500

Proudly Richardson&Wrench

Richardson & Wrench Elizabeth Bay / Potts Point
02 8356 2700

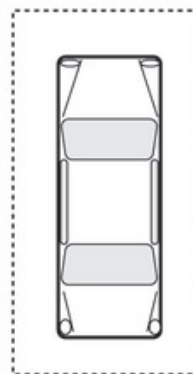


R&W | The best reputation
in real estate
Elizabeth Bay/Potts Point

Contact:
Greg McKinley
0412 044 822

Contact:
Andrew Hoggett
0412 208 614

Contact:
Penny Timothy
0418 546 500



OFF STREET
PARKING

5 / 2 Billyard Avenue ELIZABETH BAY "CAVENDISH HALL"

Plans shown are for presentation purposes only and are not part of any legal document or title and are subject to errors, omissions, inaccuracies and they should not be used as sole and/or accurate reference for purchasing decision. Interested parties should make their own enquiries using other sources supplied. Dimensions shown on the plans are approximate values in length by width. Illustration by Raoul Isidro 04111 28500.

Every precaution has been taken to establish accuracy of the information in this brochure but does not constitute any representation by the vendor or agent.

R&W