

## 23/8 Birtley Place ELIZABETH BAY, NSW

2 bed | 1 bath

# R&W

- \* Prestige Art Deco building
- \* King-size main bedroom, large second bedroom / study, separate dining
- \* French doors and plantation shutters
- \* Polished floorboards, new Sisal carpet
- \* Gas appliances and central heating
- \* Basement storage space on title
- \* Internal laundry plus common laundry space
- \* Company title apartment for owner-occupiers

[rwebay.com.au/3090256](http://rwebay.com.au/3090256)

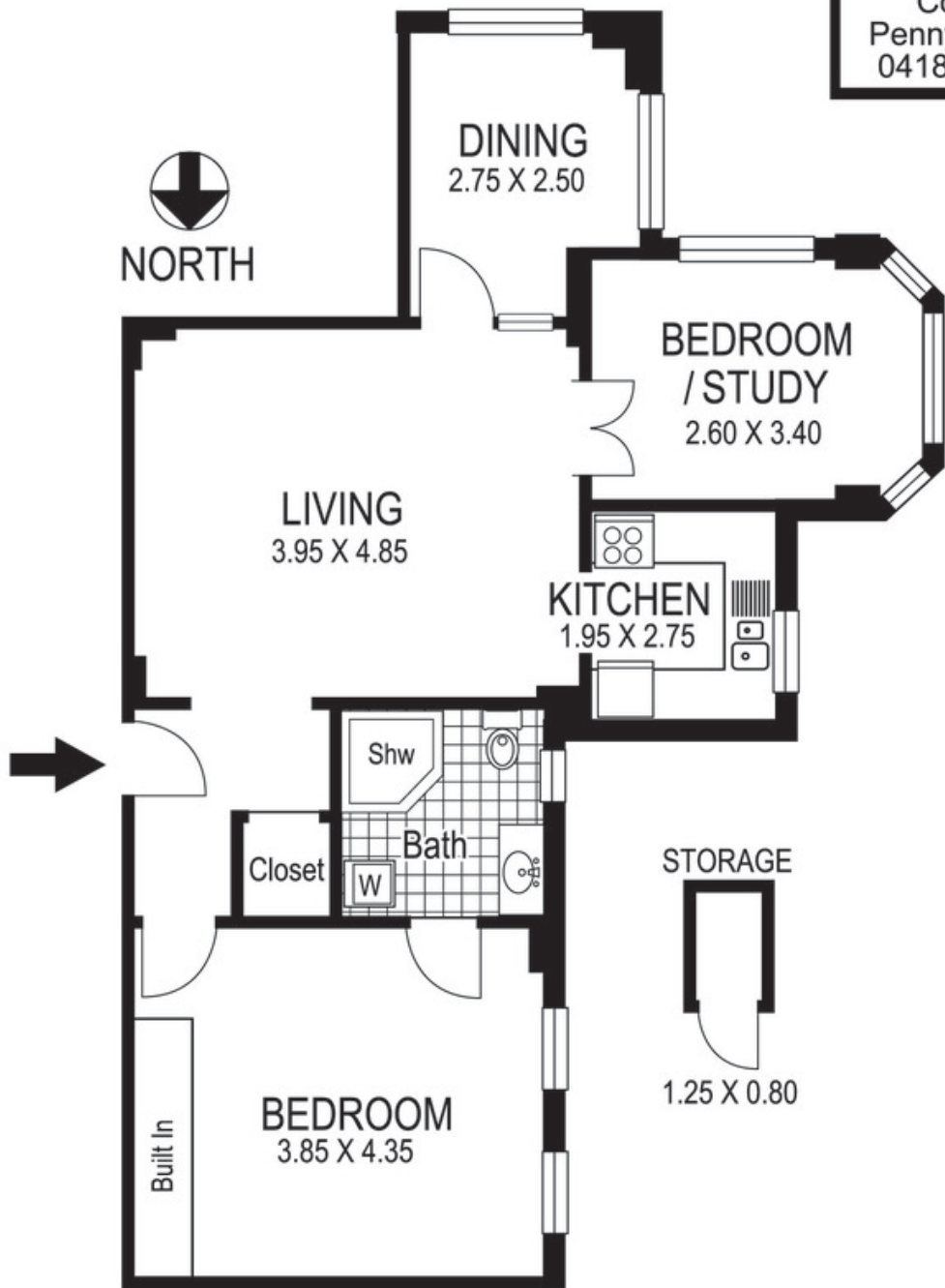
Penny Timothy 0418 546 500

Angelo Bouras 0401 658 653

**Proudly Richardson&Wrench**

Richardson & Wrench Elizabeth Bay / Potts Point  
02 8356 2700

Contact:  
Penny Timothy  
0418 546 500



**23 / 8 Birtley Place**  
**ELIZABETH BAY**  
*"BIRTLEY TOWERS"*

Plans shown are for presentation purposes only and are not part of any legal document or title and are subject to errors, omissions, inaccuracies and they should not be used as sole and/or accurate reference for purchasing decision. Interested parties should make their own enquiries using other sources supplied. Dimensions shown on the plans are approximate values in length by width. Illustration by Raoul Isidro 04111 28500.