



8 /24 Orwell Street POTTS POINT, NSW

1 bed | 1.5 bath | 1 car

R&W

- * Level access via secure elevator directly into private foyer
- * Impressive open plan main living/dining with gas fireplace
- * 2 large marble terraces provide enclosable extra living areas

- * Award winning main kitchen, steel dining island, stone benchtop
- * Liebherr fridge, 3 Smeg ovens, warming drawers, coffee machine
- * St/steel alfresco kitchen/bar with Smeg bbq/roastisserie, wine fridge
- * Lavish bedroom suite, w/in robe, marble bathroom (hea...

rwebay.com.au/3190965

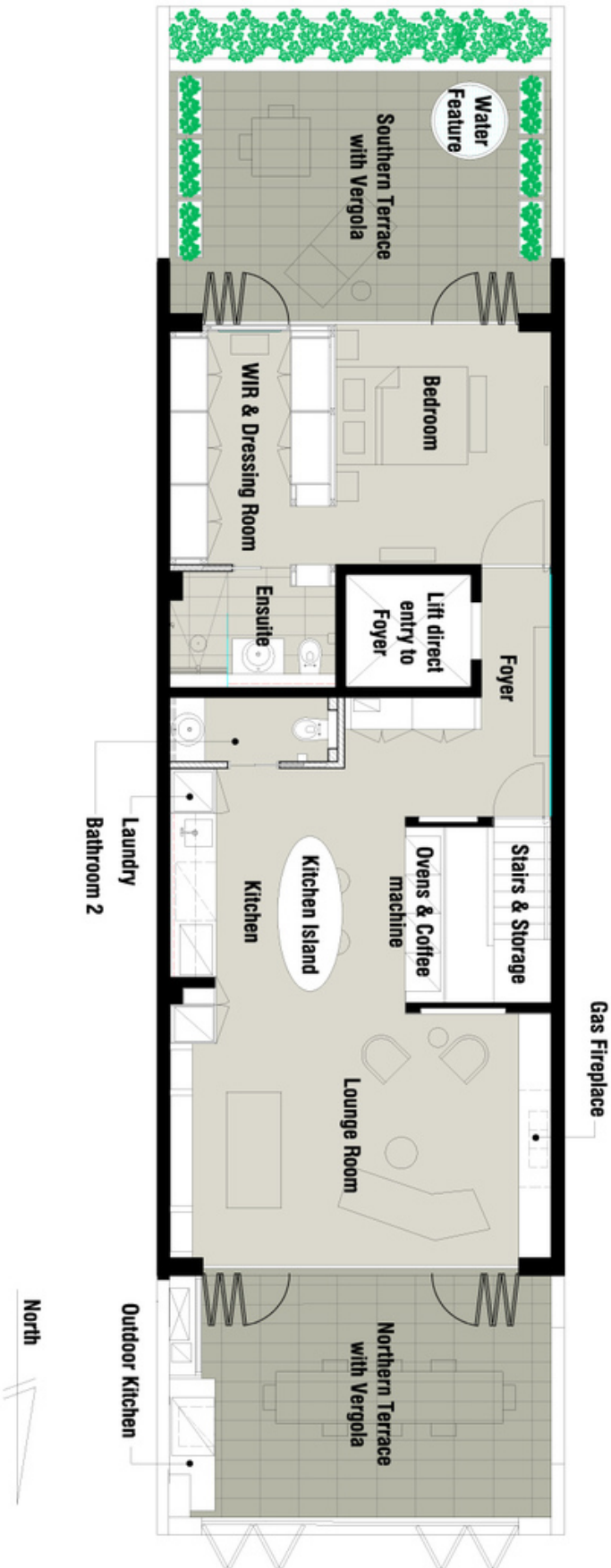
Jason Boon 0418 671 494

Geoff Cox 0418 231 004

Proudly Richardson&Wrench

Richardson & Wrench Elizabeth Bay / Potts Point
02 8356 2700

24 Orwell Street, Penthouse/apt 8; Potts Point NSW



Every precaution has been taken to establish accuracy of the information in this brochure but does not constitute any representation by the vendor or agent.

