



15/51 Elizabeth Bay Road ELIZABETH BAY, NSW

3 bed | 2 bath | 1 car

R&W

An imaginative redesign has added contemporary chic to this north facing penthouse style apartment's classical grandeur. Light-filled and impressively proportioned - the mood indoors is perfect for sophisticated open plan living while direct private access cleverly connects to the huge (approx 101sqm on title!) northerly roof-garden for sublime private outdoor entertaining with harbour views. Exclusively positioned in a grand security building, the cool harbourside lifestyle on offer here is unique!

? Dramatic 2 storey entry foyer, large open living/dining zones

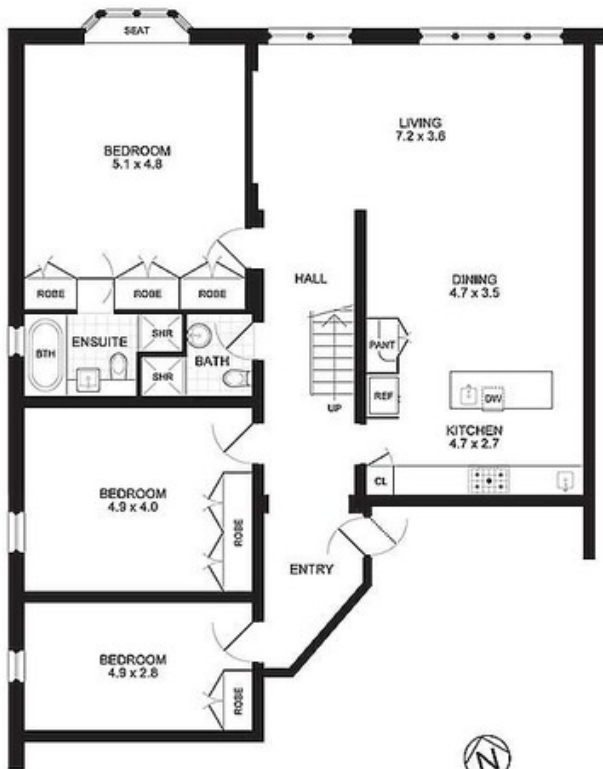
rwebay.com.au/3199133

Jason Boon 0418 671 494

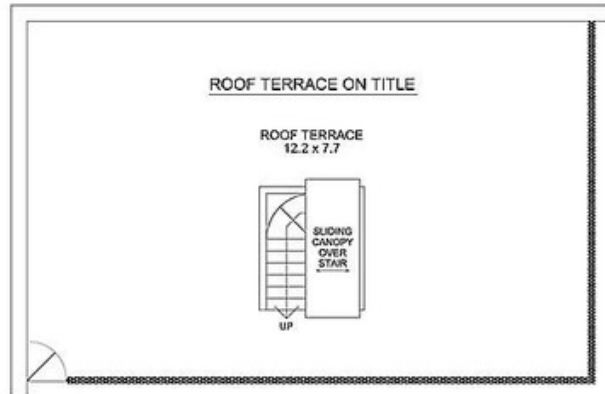
Geoff Cox 0418 231 004

Proudly Richardson&Wrench

Richardson & Wrench Elizabeth Bay / Potts Point
02 8356 2700



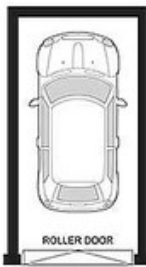
FLOOR PLAN
Scale 1cm = 1m (approx)



ROOF TERRACE ON TITLE

ROOF TERRACE
12.2 x 7.7

FIRST FLOOR
Scale 1cm = 1m (approx)



LU GARAGE
20 SQM

GARAGE
Not to Scale



STORE ROOM/
LAUNDRY

LAUNDRY
Not to Scale

APARTMENT 15
51 ELIZABETH BAY ROAD
ELIZABETH BAY

Contact

Jason Boon
Phone: 8358 2700 Mobile: 0418 671 494
Email: jboon@rwebay.com.au

Geoff Cox
Phone: 8358 2734 Mobile: 0418 231 004
Email: gcox@rwebay.com.au

R&W Elizabeth Bay
Potts Point

PROMOPLANS ...adding REAL value!
E&OE This plan is for illustrative purposes only and dimensions are approximate. It does not constitute part of any legal document or commercial contract for the sale or lease of this property.
COPYRIGHT © 2011 PROMOPLANS 02 9572 7111
Warning: Usage restricted under the Copyright Act