



## 26/6 Stanley Street DARLINGHURST, NSW

1 bed | 1 bath

Quietly set within the grand circa 1920's building, St James, this apartment provides the ideal lock up and go lifestyle. Situated at the city side end of Stanley Street, this location offers the convenience of the CBD only moments away and the trendy lifestyle of Darlinghurst at your doorstep. Maintaining many original features including soaring ceilings and timber detailing, the apartment has been renovated and provides a great mix of new and old.

\* Renovated kitchen with stone benchtops plus internal laundry

# R&W

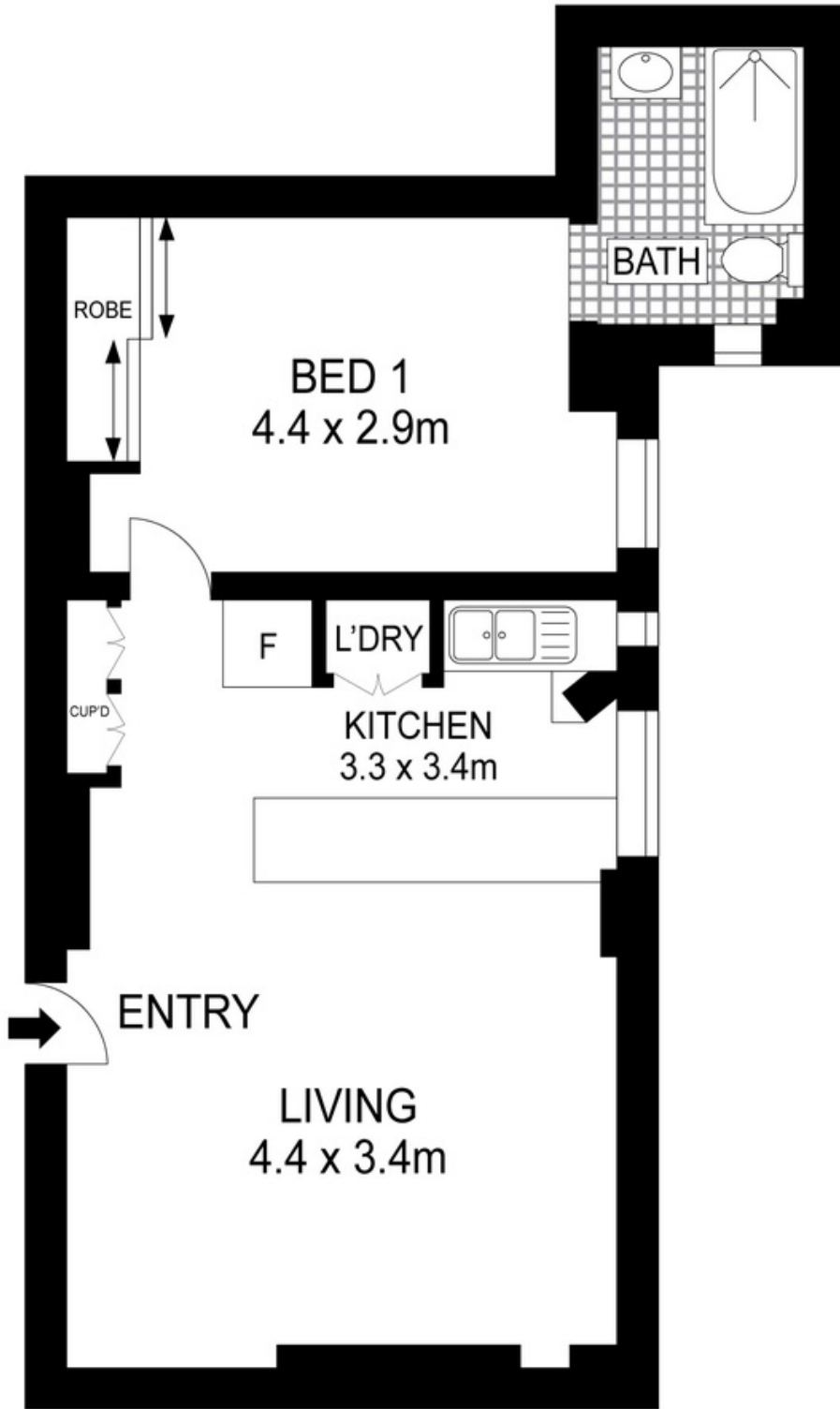
[rwebay.com.au/3218095](http://rwebay.com.au/3218095)

Greg McKinley 0412 044 822

Angelo Bouras 0401 658 653

**Proudly Richardson&Wrench**

Richardson & Wrench Elizabeth Bay / Potts Point  
02 8356 2700



Scale in metres. Indicative only. Dimensions are approximate. All information contained herein is gathered from sources we believe to be reliable. However, we cannot guarantee its accuracy and interested persons should rely on their own enquiries.

26/6 Stanley Street, Darlinghurst

**R&W**  
**R&W**

Every precaution has been taken to establish accuracy of the information in this brochure but does not constitute any representation by the vendor or agent.