



205/6A Birtley Place ELIZABETH BAY, NSW

2 bed | 1 bath | 1 car

R&W

- ☑️ Featured in 'Home Beautiful' magazine
- ☑️ 2 generous bedrooms with b/ins, main with balcony access
- ☑️ Intuitive open-plan living space
- ☑️ Integrated modern CaesarStone island kitchen
- ☑️ Breakfast bar, European appliances, including integrated fridge/freezer
- ☑️ Side balcony with a lovely leafy outlook
- ☑️ Stylish designer bathroom with bath
- ☑️ Concealed internal laundry

rwebay.com.au/3220810

Jason Boon 0418 671 494

Angelo Bouras 0401 658 653

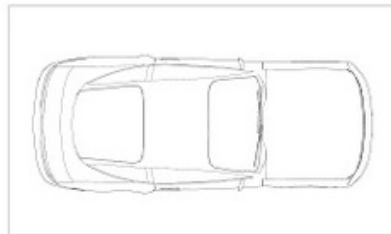
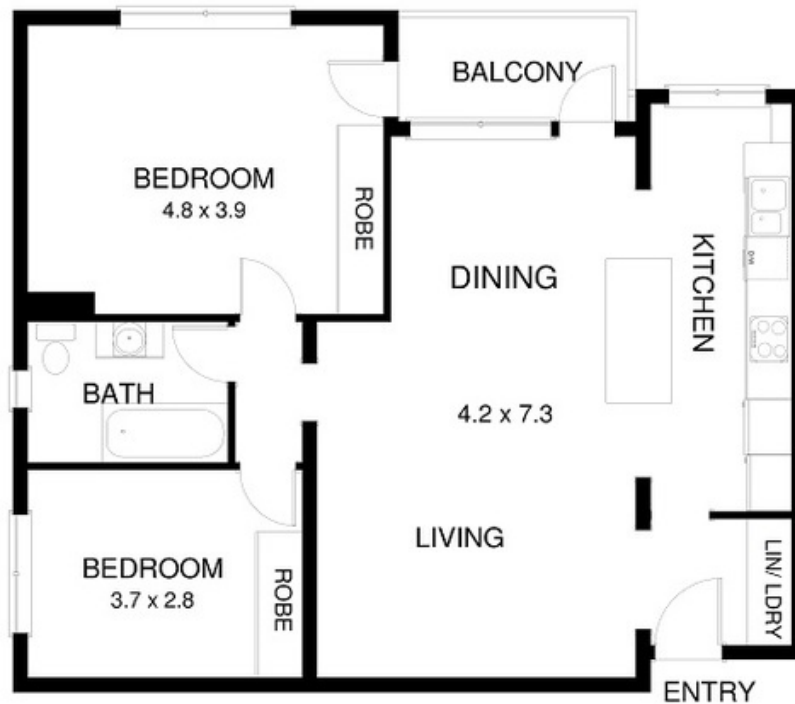
Geoff Cox 0418 231 004

Proudly Richardson&Wrench

Richardson & Wrench Elizabeth Bay / Potts Point
02 8356 2700

R&W

Elizabeth Bay / Potts Point
8356 2700



UNDERCOVER SECURITY
CARSPACE

205/6A Birtley Place ELIZABETH BAY *"BARODA HALL"*

Plans shown are for presentation purposes only and are not part of any legal document or title and are subject to errors, omissions, inaccuracies and they should not be used as sole and/or accurate reference for purchasing decision. Interested parties should make their own enquiries using other sources supplied. Dimensions shown on the plans are approximate values in length by width.

R&W