



1204/73 Victoria Street POTTS POINT, NSW

2 bed | 2 bath | 1 car

R&W

- *Air-conditioning up & down stairs
- *Security Parking space on title
- *Storage unit at end of car space
- *Split level, with carpeted bedrooms
- *Internal laundry, Linen closet
- *Fantastic opportunity in sought-after location
- *Close to St Vincent's school, transport and the buzz of Macleay St

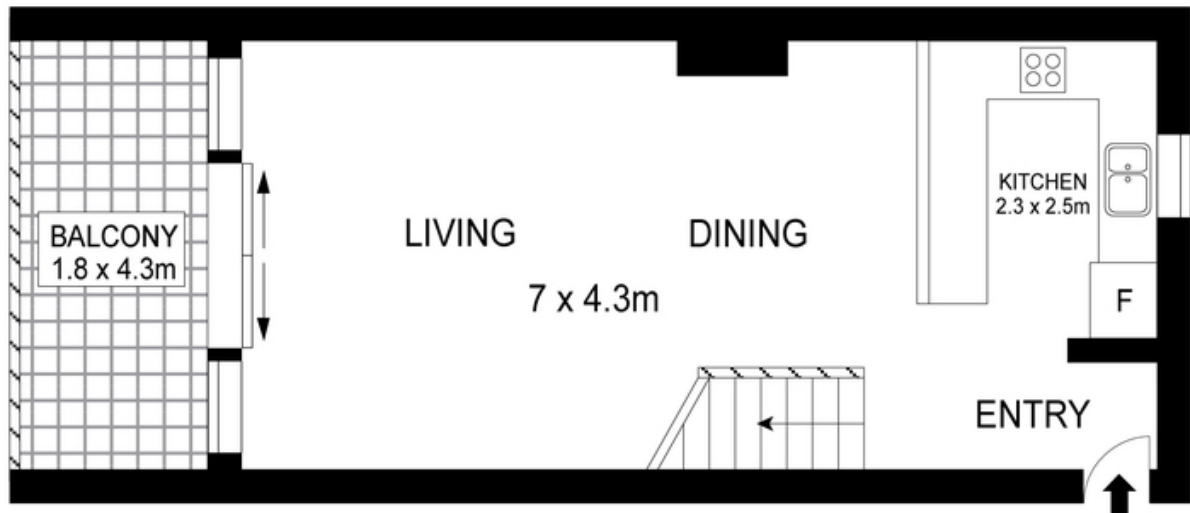
rwebay.com.au/3261424

Luke McDonnell 0418 844 110

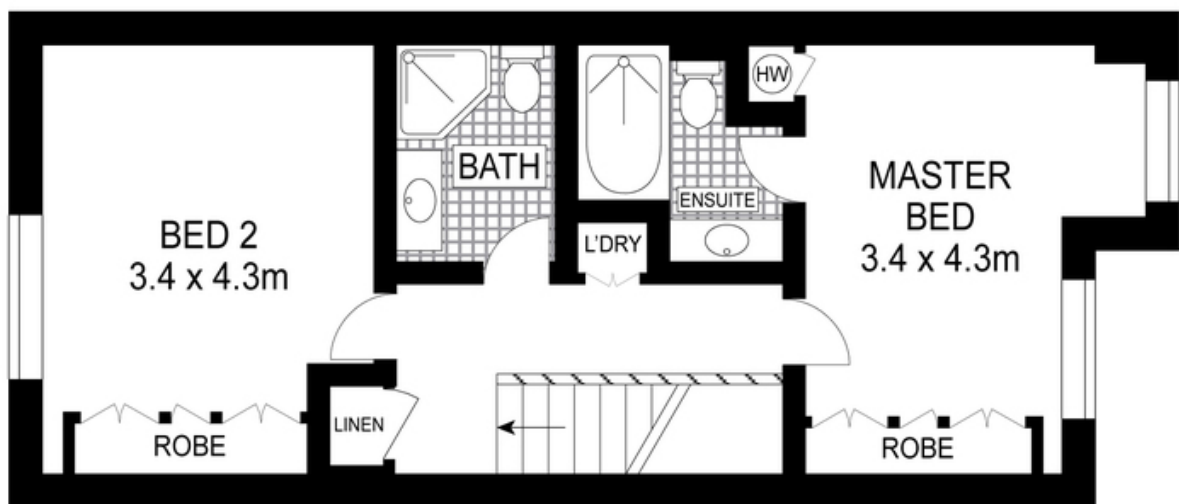
Greg McKinley 0412 044 822

Proudly Richardson&Wrench

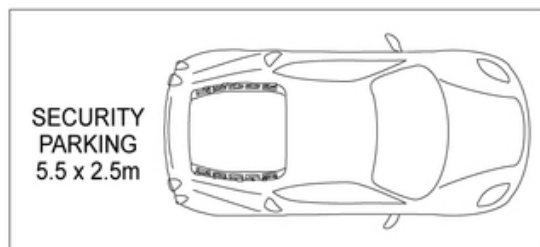
Richardson & Wrench Elizabeth Bay / Potts Point
02 8356 2700



SECOND FLOOR



TOP FLOOR



Scale in metres. Indicative only. Dimensions are approximate. All information contained herein is gathered from sources we believe to be reliable. However, we cannot guarantee its accuracy and interested persons should rely on their own enquiries.



1204/73 Victoria Street, Potts Point

R&W
R&W

Every precaution has been taken to establish accuracy of the information in this brochure but does not constitute any representation by the vendor or agent.