



8C/153 Bayswater Road RUSHCUTTERS BAY, NSW

2 bed | 2 bath | 1 car

R&W

- * Lock up garage conveniently located near the lift
- * Full separate laundry and storage closet
- * Dark wooden floorboards in living area/kitchen
- * Two bathrooms, ensuite off main bedroom
- * Reverse cycle air conditioning
- * Close to historic Reg Bartley Oval and harbour parks
- * Easy walk to cafes and restaurants of Potts Point

rwebay.com.au/3285621

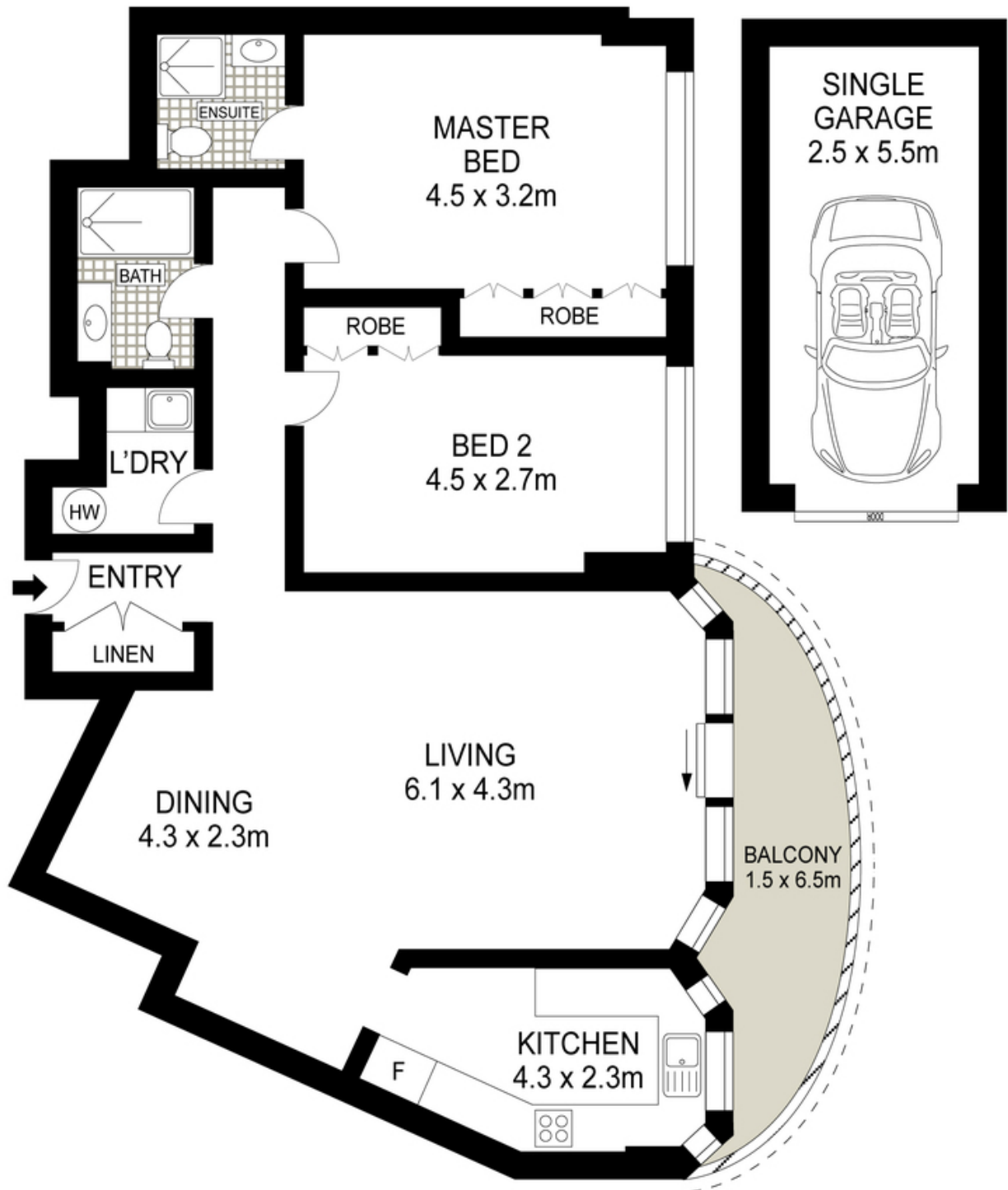
Greg McKinley 0412 044 822

Luke McDonnell 0418 844 110

Andrew Hoggett 0412 208 614

Proudly Richardson&Wrench

Richardson & Wrench Elizabeth Bay / Potts Point
02 8356 2700



LEVEL EIGHT



Scale in metres. Indicative only. Dimensions are approximate. All information contained herein is gathered from sources we believe to be reliable. However, we cannot guarantee its accuracy and interested persons should rely on their own enquiries.



8C/153 Bayswater Road, Rushcutters Bay



Every precaution has been taken to establish accuracy of the information in this brochure but does not constitute any representation by the vendor or agent.