



## 32/101 Macleay Street POTTS POINT, NSW

1 bed | 1 bath

Light-filled and unexpectedly spacious with a separate bed alcove, this city pad is quietly set well back and hidden from the cosmopolitan streetscape, enjoying elevated glimpses of some of Sydney's landmarks. The airy and open plan layout is ideal for the 1st home buyer, astute investor or someone looking for a lock up and go apartment near the city.

- \* Quiet location at the rear of the building
- \* Airy apartment with great cross flow
- \* Separate kitchen with scope to add value

# R&W

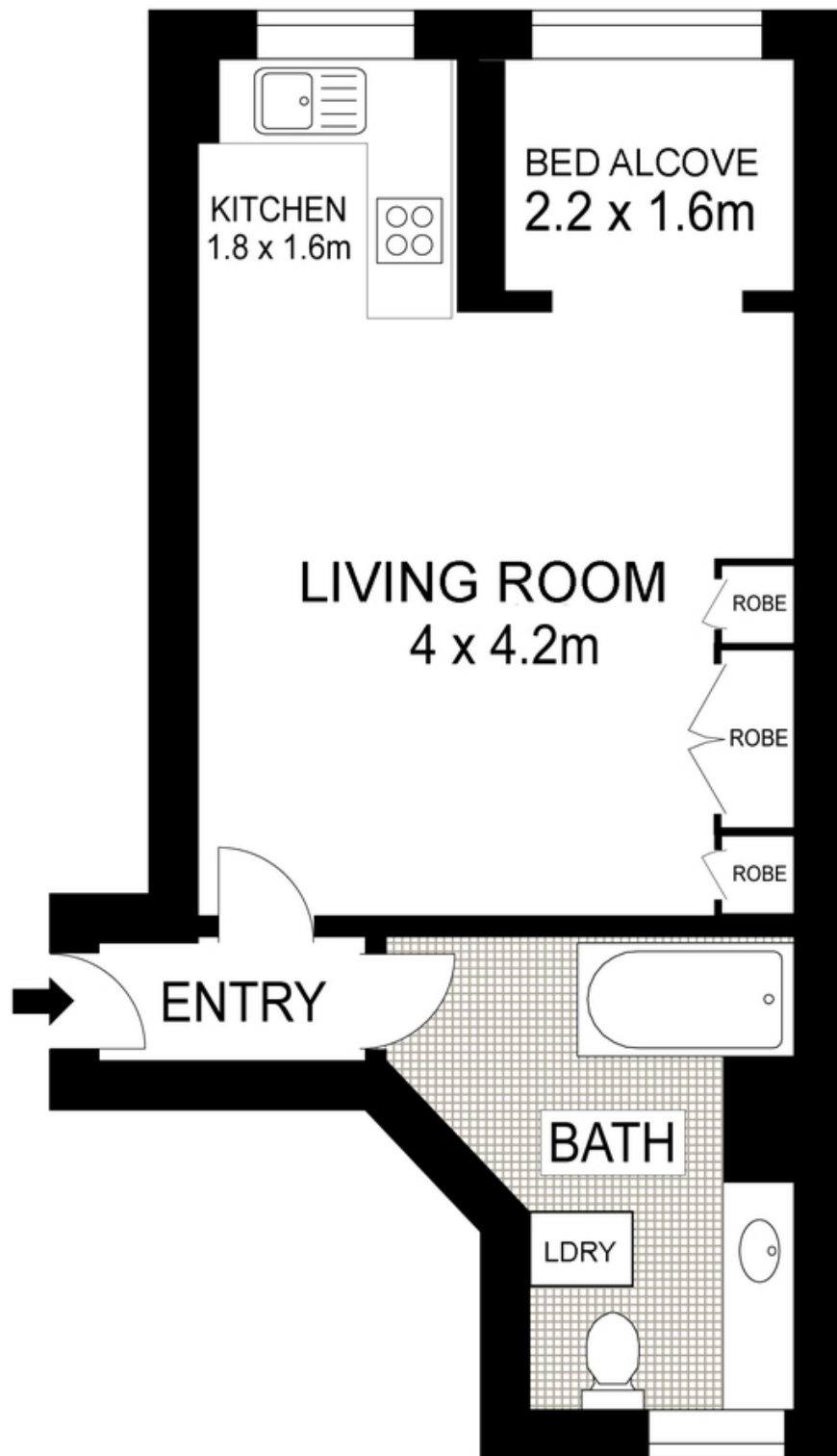
[rwebay.com.au/3452283](http://rwebay.com.au/3452283)

Angelo Bouras 0401 658 653

Penny Timothy 0418 546 500

**Proudly Richardson&Wrench**

Richardson & Wrench Elizabeth Bay / Potts Point  
02 8356 2700



**LEVEL THREE**



Plans shown are for presentation purposes only and are not part of any legal document or title. They are subject to errors, omissions, inaccuracies and should not be used as a sole and accurate reference. Interested parties should make their own inquiries using independent sources.

32/101 Macleay Street, Potts Point

**R&W**  
Mosman / Neutral Bay 9969 7622

Every precaution has been taken to establish accuracy of the information in this brochure but does not constitute any representation by the vendor or agent.

**R&W**