



2605/1 Kings Cross Road RUSHCUTTERS BAY, NSW

2 bed | 2 bath | 1 car

R&W

- * High above the gateway to Rushcutters Bay, Potts Point, Darlinghurst and the City
- * Level lift access via grand main lobby or from secure parking + large storage cage on separate title
- * Spacious, open plan, north facing dining and living areas with large sliding doors
- * Two large balconies overlooking the city and harbour for year round outdoor living and entertaining
- * Scandinavian Beech timber floor throughout and quality carpet in master
- * Granite kitchen, Miele appliances (induction cooktop,...

rwebay.com.au/3460527

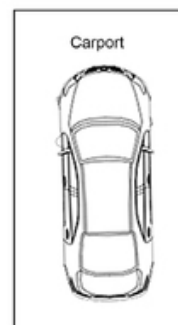
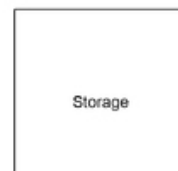
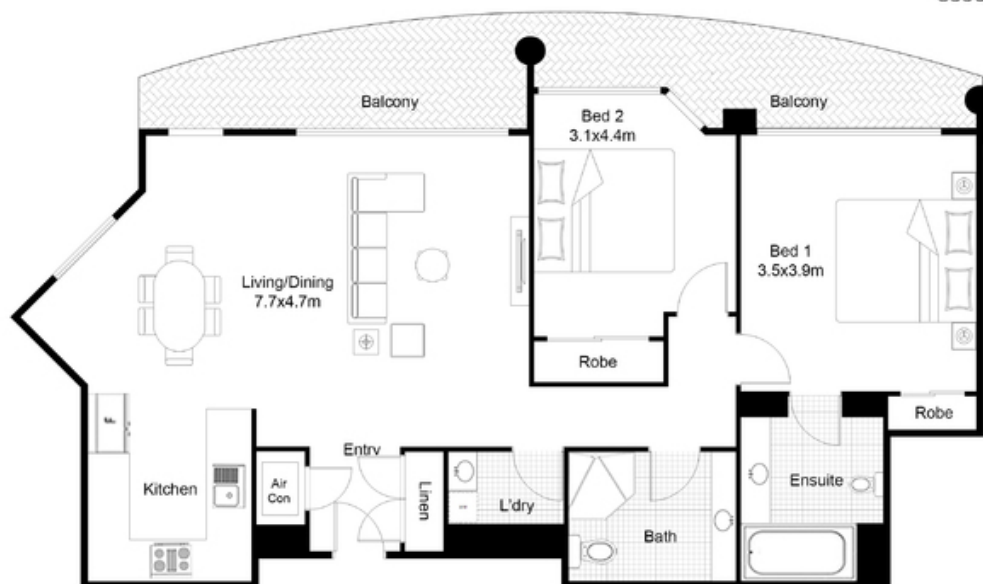
Greg McKinley 0412 044 822

Penny Timothy 0418 546 500

Luke McDonnell 0418 844 110

Proudly Richardson&Wrench

Richardson & Wrench Elizabeth Bay / Potts Point
02 8356 2700

**R&W**Elizabeth Bay / Potts Point
8356 2700**FLOOR PLAN**

Floor plan, furniture, and fixture measurements and dimensions are approximate and are for illustrative purposes only. Boxbrownie.com gives no guarantee, warranty or representation as to the accuracy and completeness of the floor plan.

2605/1 Kings Cross Road