



22/8 Wylde Street POTTS POINT, NSW

1 bed | 1 bath

- * Combined living and bedroom flows to balcony
- * Built-in wall bed and storage maximises space
- * Room for a couch, coffee table and television
- * Separate bright kitchen with timber benchtops
- * Bathroom with natural light, shared laundry
- * Well-presented, move straight in or rent out now
- * Scope to enhance, personalise and capitalise
- * Accessible to bus and rail transport and the CBD

R&W

[rwebay.com.au/3469674](https://www.rwebay.com.au/3469674)

Greg McKinley 0412 044 822

Angelo Bouras 0401 658 653

Penny Timothy 0418 546 500

Proudly Richardson&Wrench

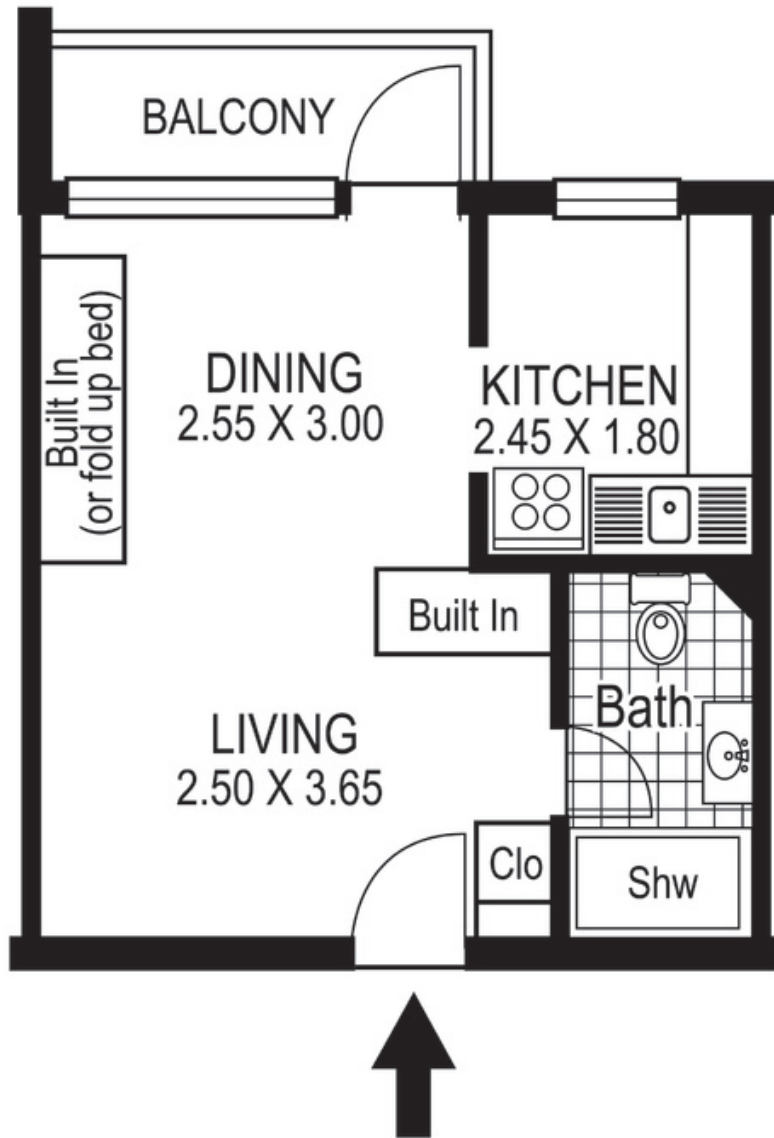
Richardson & Wrench Elizabeth Bay / Potts Point
02 8356 2700

R&W

Elizabeth Bay / Potts Point
8356 2700



NORTH



22 / 8 Wylde Street
POTTS POINT
"FAIRHAVEN"

Plans shown are for presentation purposes only and are not part of any legal document or title and are subject to errors, omissions inaccuracies and they should not be used as the sole and/or accurate reference for purchasing decision. Interested parties should make their own inquiries using other sources supplied. Dimensions in length and width are approximate. Illustration by Raoul Isidro 0411128500

Every precaution has been taken to establish accuracy of the information in this brochure but does not constitute any representation by the vendor or agent.

R&W