



16/22 Wylde Street POTTS POINT, NSW

3 bed | 3 bath | 2 car

R&W

- ? Exclusively located in a tightly held and superbly maintained security block
- ? Level access via security elevator from double security private garage
- ? Only one other apartment shares this 4th floor rear wing lift lobby
- ? Central foyer displays views as soon as the apartment's front door is opened
- ? Large open plan formal dining area adjoins huge open plan main living room
- ? Loggia style large main alfresco dining terrace feels...

rwebay.com.au/3470092

Jason Boon 0418 671 494

Geoff Cox 0418 231 004

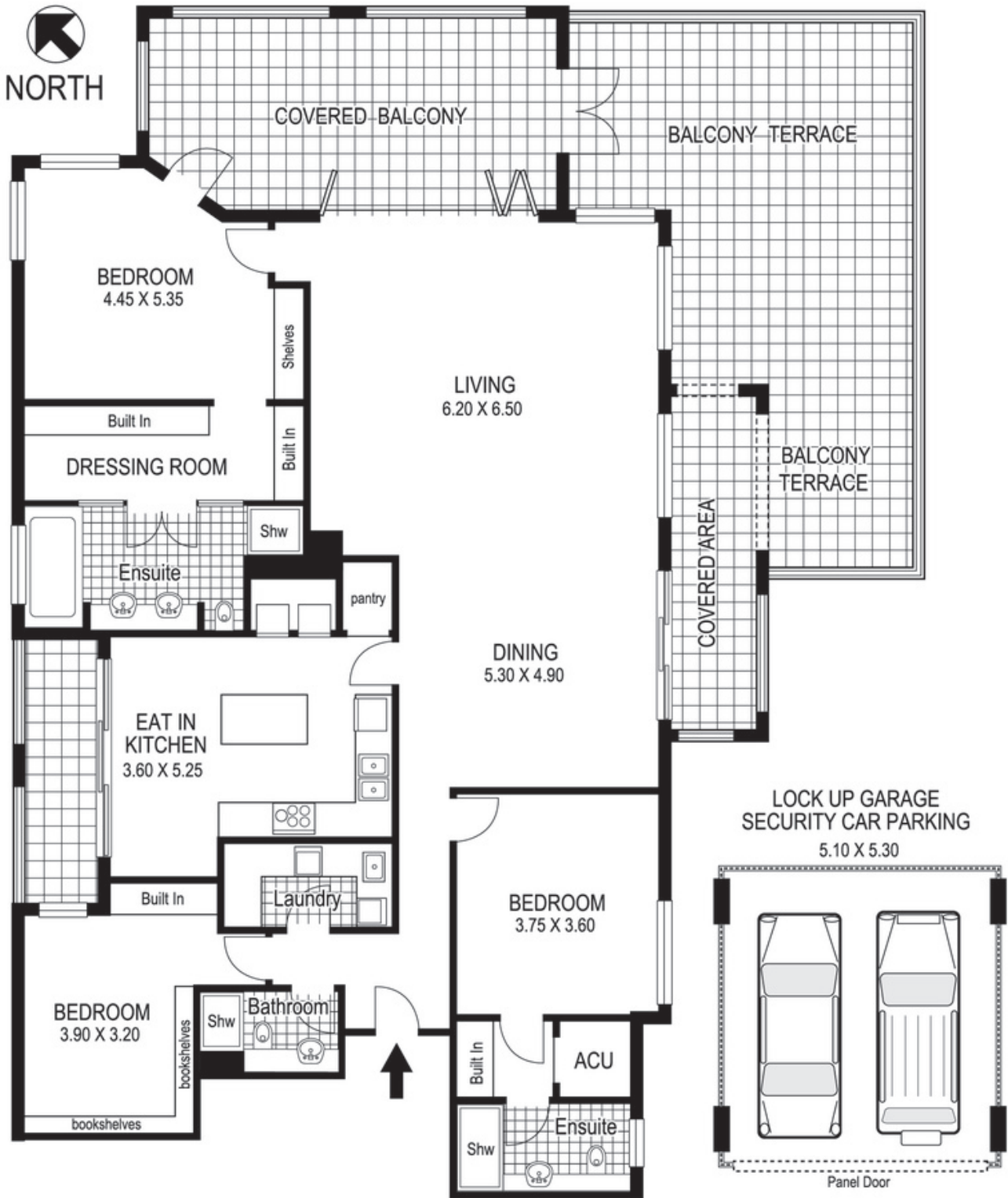
Proudly Richardson&Wrench

Richardson & Wrench Elizabeth Bay / Potts Point
02 8356 2700

Contact:
Jason Boon
0418 671 494

Contact:
Geoff Cox
0418 231 004

R&W | The best reputation
in real estate
Elizabeth Bay/Potts Point



16 / 22 Wylde Street POTTS POINT

Plans shown are for presentation purposes only and are not part of any legal document or title and are subject to errors, omissions, inaccuracies and they should not be used as sole and/or accurate reference for purchasing decision. Interested parties should make their own enquiries using other sources supplied. Dimensions shown on the plans are approximate values in length by width. Illustration by Raoul Isidro 04111 28500.

Every precaution has been taken to establish accuracy of the information in this brochure but does not constitute any representation by the vendor or agent.

R&W