



## 3/4 Ward Avenue POTTS POINT, NSW

2 bed | 1 bath

- \* Gorgeous outlook across lovely garden area
- \* Expansive easterly view from doorstep as far as Bondi Junction
- \* Crucially located within the Darlinghurst Public School catchment
- \* Kitchen with gas connection, Smeg appliances, stone benches
- \* East/west aspect providing great cross ventilation and ample light

# R&W

[rwebay.com.au/3495939](http://rwebay.com.au/3495939)

Jason Boon 0418 671 494

Geoff Cox 0418 231 004

**Proudly Richardson&Wrench**

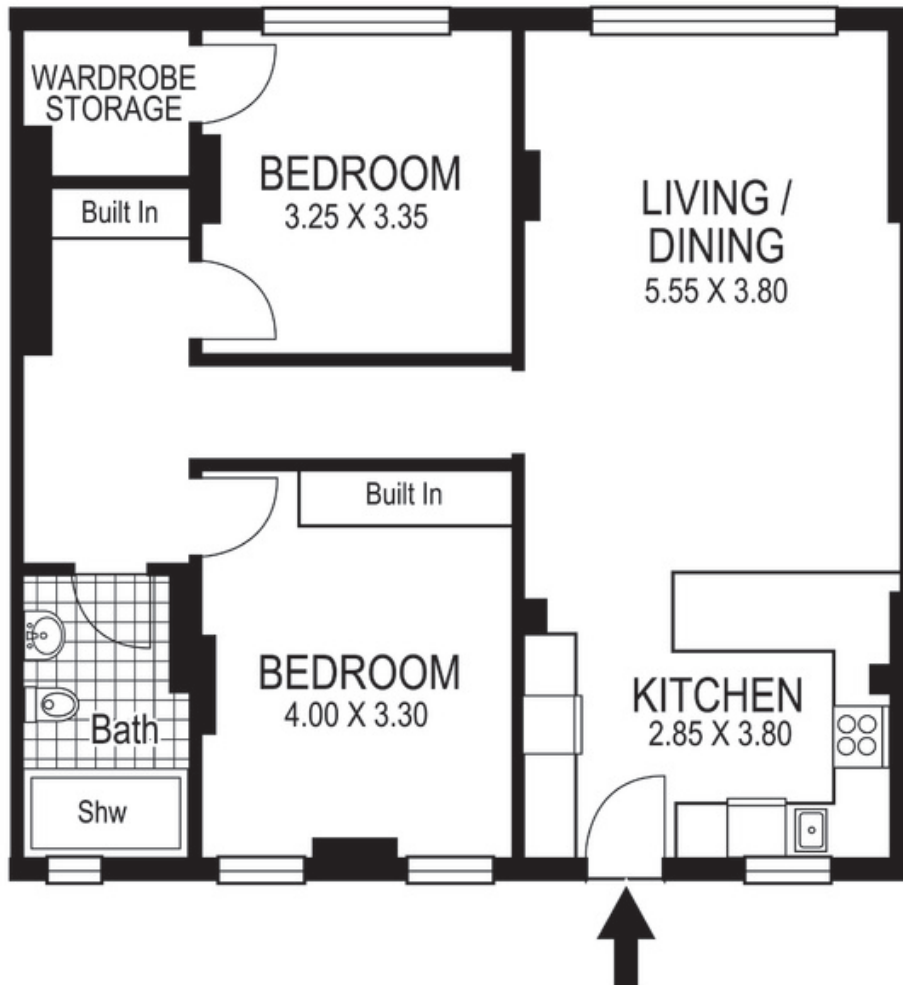
Richardson & Wrench Elizabeth Bay / Potts Point  
02 8356 2700

**R&W**

Elizabeth Bay / Potts Point  
8356 2700



NORTH



3 / 4 Ward Avenue  
POTTS POINT  
*"MARLBOROUGH HALL"*

Plans shown are for presentation purposes only and are not part of any legal document or title and are subject to errors, omissions inaccuracies and they should not be used as the sole and/or accurate reference for purchasing decision. Interested parties should make their own inquiries using other sources supplied. Dimensions in length and width are approximate. Illustration by Raoul Isidro 0411128500

Every precaution has been taken to establish accuracy of the information in this brochure but does not constitute any representation by the vendor or agent.

**R&W**