



## 25/41-49 Roslyn Gardens ELIZABETH BAY, NSW

2 bed | 2 bath | 1 car

**R&W**

- \* Common area pool + parking on title
- \* High NE views across to Rushcutters Bay Marina and Reg Bartley Oval
- \* Mirror splashback in kitchen reflecting views of Darling Point
- \* Black-out curtains in bedrooms
- \* Regupol impact sound acoustic underlay
- \* Superb kitchen with wood grain finish
- \* Integrated fridge, freezer, washing machine + dishwasher
- \* Integrated combination oven + microwave
- \* Easy stroll to the Rushcutters Bay tennis courts, caf...

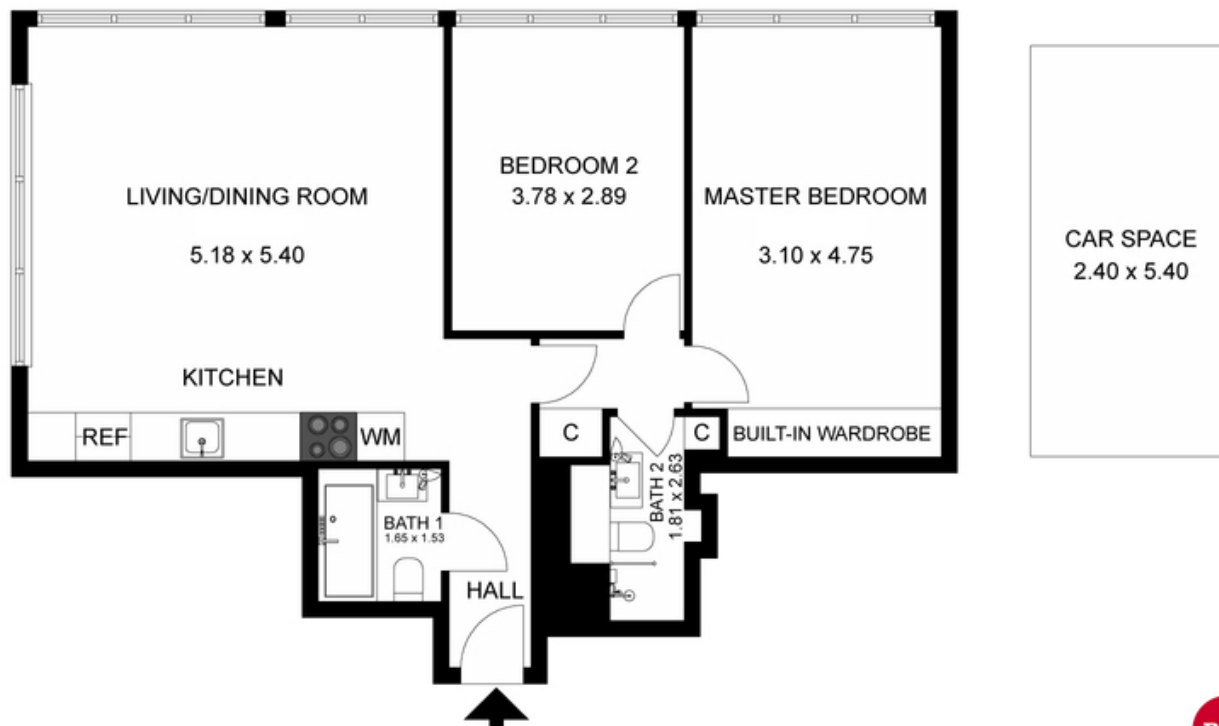
**[rwebay.com.au/3537114](http://rwebay.com.au/3537114)**

Penny Timothy 0418 546 500

Greg McKinley 0412 044 822

**Proudly Richardson&Wrench**

Richardson & Wrench Elizabeth Bay / Potts Point  
02 8356 2700



25/41-49 ROSLYN GARDENS, ELIZABETH BAY



Plans shown are for presentation purposes only and are not part of any legal document or title and are subject to errors, omissions, inaccuracies and they should not be used as the sole and/or accurate reference for purchasing decision. Interested parties should make their own inquiries using other sources supplied. Dimensions in length and width are approximate.