



## 15/10C Challis Avenue POTTS POINT, NSW

1 bed | 1 bath

Elevated high above the streetscape in Potts Point's favourite enclave, this open plan & light apartment with access to an oversized communal roof space with CBD views is set in an exclusive classic Art Deco security block. This home is ideally located to take full advantage of the cosmopolitan lifestyle on offer with Potts Point cafes shops, and parks all at your doorstep plus an easy walk into the CBD.

\* Spacious and separate kitchen

\* High ceilings, original feature fireplace

Kitchen Renovator ? Cut and Paste Into your web browser...

**R&W**

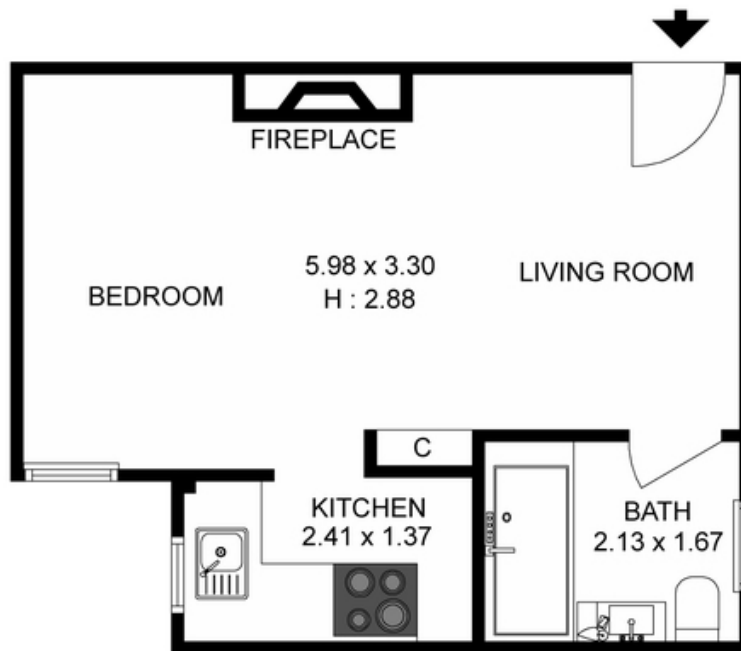
**[rwebay.com.au/3537445](http://rwebay.com.au/3537445)**

Angelo Bouras 0401 658 653

Luke McDonnell 0418 844 110

**Proudly Richardson&Wrench**

Richardson & Wrench Elizabeth Bay / Potts Point  
02 8356 2700



R&W

15/10c Challis Avenue, Potts Point

Plans shown are for presentation purposes only and are not part of any legal document or title and are subject to errors, omissions, inaccuracies and they should not be used as the sole and/or accurate reference for purchasing decision. Interested parties should make their own inquiries using other sources supplied. Dimensions in length and width are approximate.

Produced by DIAKRIT