



139 Dowling Street WOOLLOOMOOLOO, NSW

4 bed | 3 bath | 2 car

R&W

- * Massive Victorian terrace, built circa 1870s
- * Zoned commercial/residential mixed use space
- * Huge scope for personalised design to maximise layout
- * Rear lane access, with capacity for two cars
- * Paved back courtyard with great potential
- * Large floorspace, w lower level, street level + 2 upper floors
- * Lower level with kitchen, opening to rear courtyard
- * Currently 4 bedrooms across upper 2 levels
- * Dual east-west aspect, great westerly view to the CBD

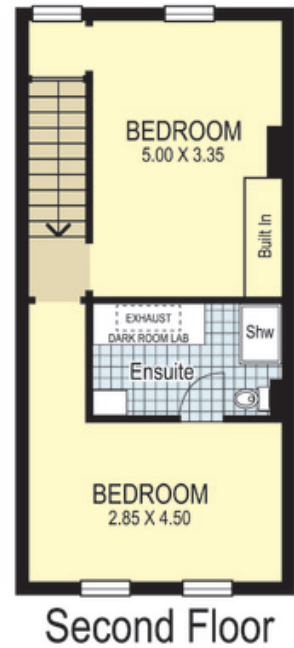
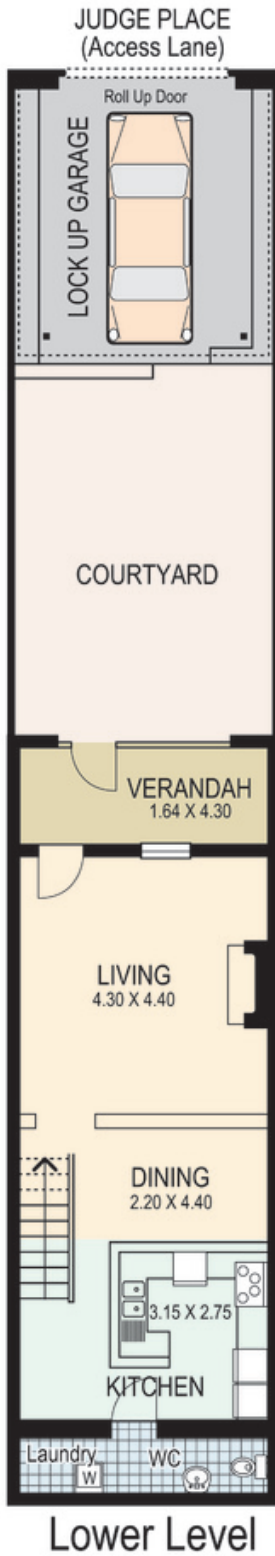
[rwebay.com.au/3545949](https://www.rwebay.com.au/3545949)

Jason Boon 0418 671 494

Geoff Cox 0418 231 004

Proudly Richardson&Wrench

Richardson & Wrench Elizabeth Bay / Potts Point
02 8356 2700



139 Dowling Street WOOLLOOMOOLOO

Plans shown are for presentation purposes only and are not part of any legal document or title and are subject to errors, omissions inaccuracies and they should not be used as the sole and/or accurate reference for purchasing decision. Interested parties should make their own inquiries using other sources supplied. Dimensions in length and width are approximate. Illustration by Raouil Isidro 0411128500

Every precaution has been taken to establish accuracy of the information in this brochure but does not constitute any representation by the vendor or agent.