



## 11/22-24 Wolseley Road POINT PIPER, NSW

1 bed | 1 bath

Currently configured as a 1 bedroom/1 bathroom space, this apartment is positioned on the top floor of the gorgeous ?Cliveden? building.

Whilst currently a rough diamond with functional facilities and outdoor deck area, there are concept plans in place for a transformation into a luxurious approx. 92sqm custom-made 2 bedroom home (subject to approval).

Perched high above the harbour, very rarely does a prop...

**R&W**

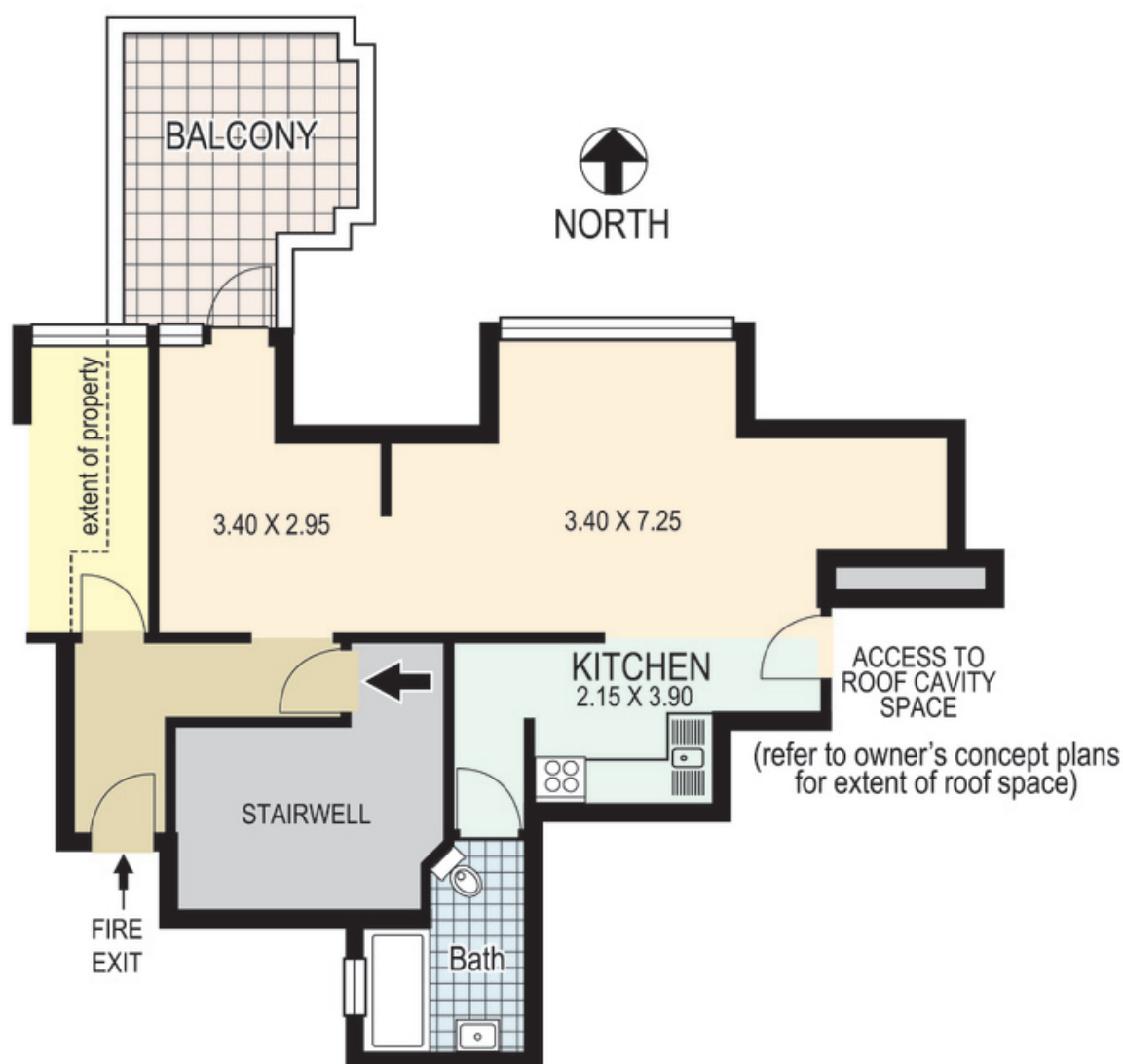
**[rwebay.com.au/3551980](https://www.rwebay.com.au/3551980)**

Jason Boon 0418 671 494

Geoff Cox 0418 231 004

**Proudly Richardson&Wrench**

Richardson & Wrench Elizabeth Bay / Potts Point  
02 8356 2700



11 / 22-24 Wolseley Road  
POINT PIPER  
"CLIVEDEN"

Plans shown are for presentation purposes only and are not part of any legal document or title and are subject to errors, omissions inaccuracies and they should not be used as the sole and/or accurate reference for purchasing decision. Interested parties should make their own inquiries using other sources supplied. Dimensions in length and width are approximate. Illustration by Raoul Isidro 0411128500

Every precaution has been taken to establish accuracy of the information in this brochure but does not constitute any representation by the vendor or agent.