



17/6A Greenknowe Avenue ELIZABETH BAY, NSW

2 bed | 1 bath | 1 car

R&W

Council: \$243.50pq
Water: Included in levies
Levies: \$1,897.00pq

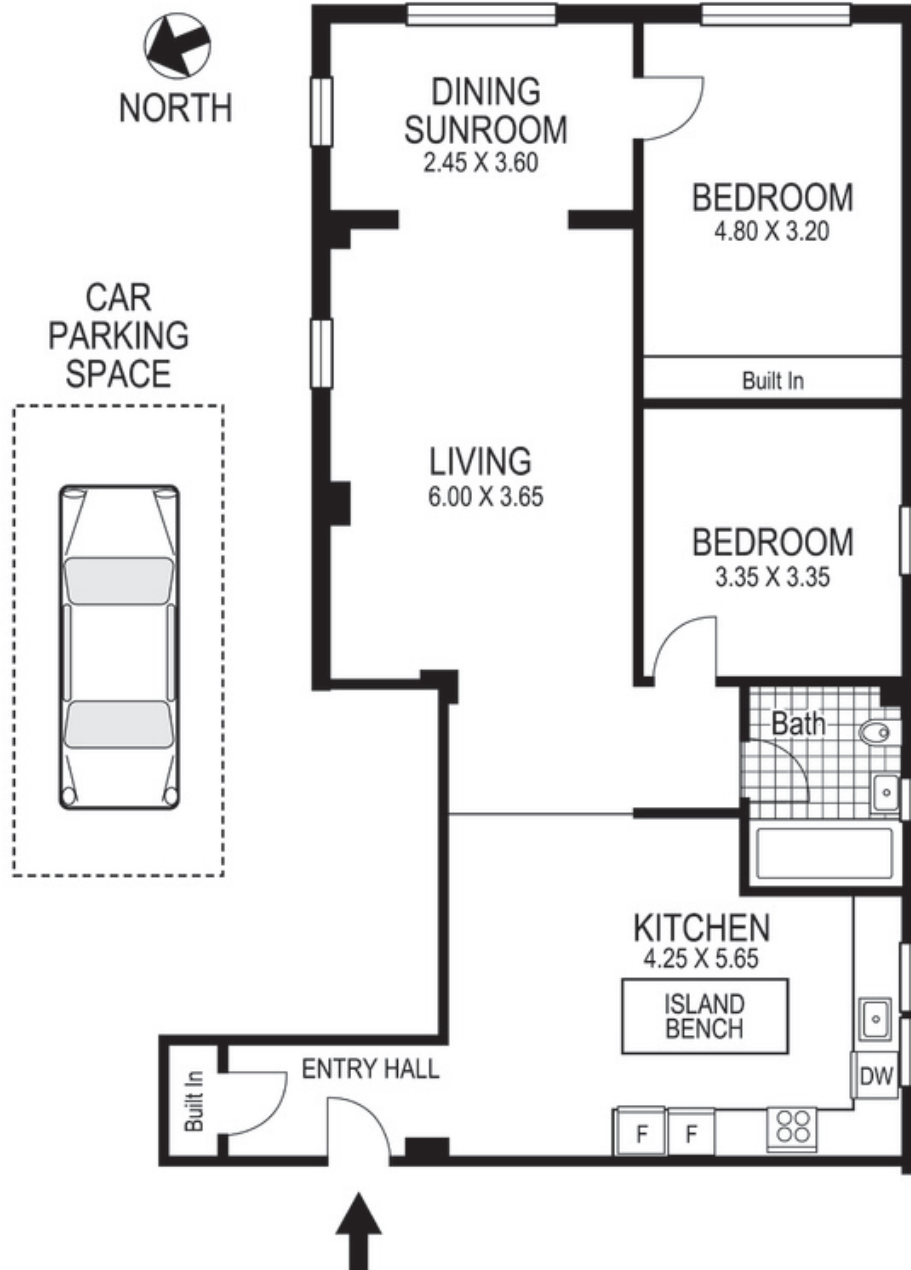
rwebay.com.au/3586991

Jason Boon 0418 671 494

Geoff Cox 0418 231 004

Proudly Richardson&Wrench

Richardson & Wrench Elizabeth Bay / Potts Point
02 8356 2700



17 / 6a Greenknowe Avenue
ELIZABETH BAY
"ONSLOW GARDENS"

Plans shown are for presentation purposes only and are not part of any legal document or title and are subject to errors, omissions inaccuracies and they should not be used as the sole and/or accurate reference for purchasing decision. Interested parties should make their own inquiries using other sources supplied. Dimensions in length and width are approximate. Illustration by Raoul Isidro 0411128500