



41/41-49 Roslyn Gardens ELIZABETH BAY, NSW

2 bed | 2 bath | 1 car

R&W

Enjoying an elevated position with 180-degree views that take in treetops, historic buildings and the bobbing boats of Rushcutters Bay, this apartment promises an enviable lifestyle. Architect designed by Hugo Stossel circa 1977, it enjoys open plan living and entertaining, generous proportions and light-filled interiors. Boasting a desirable location within footsteps to cosmopolitan cafes, bus transport and popular Rushcutters Bay Park and central to Potts Point, rail and the CBD, this apartment will appeal to a wide range of buyers.

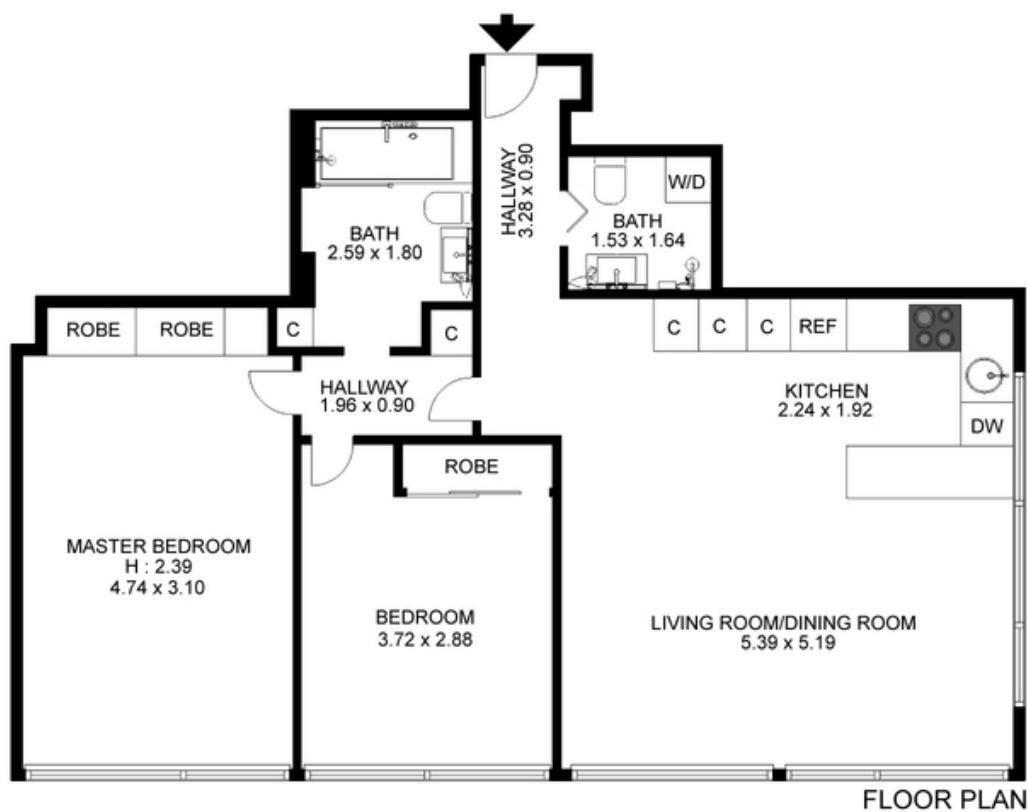
rwebay.com.au/3616924

Greg McKinley 0412 044 822

Penny Timothy 0418 546 500

Proudly Richardson&Wrench

Richardson & Wrench Elizabeth Bay / Potts Point
02 8356 2700



41/41 ROSLYN GARDENS, ELIZABETH BAY

Plans shown are for presentation purposes only and are not part of any legal document or title and are subject to errors, omissions, inaccuracies and they should not be used as the sole and/or accurate reference for purchasing decision. Interested parties should make their own inquiries using other sources supplied. Dimensions in length and width are approximate.