



## 915/2 Elizabeth Bay Road ELIZABETH BAY, NSW

2 bed | 2 bath | 1 car

**R&W**

- \* Iconic building in the centre of Elizabeth Bay
- \* Parking for one vehicle, plus visitor parking access
- \* Two sizable bedrooms, both with extensive b/ins
- \* Miele gas kitchen with pantry, integrated dishwasher
- \* Ducted r/c air conditioning, downlights throughout
- \* Situated on 9th level, awesome views east and west
- \* Full-length glass doors leading to sunny balcony
- \* Full access to spa, gym, sauna and pool in building
- \* Perfect investment opportunity or home for owner-occupier

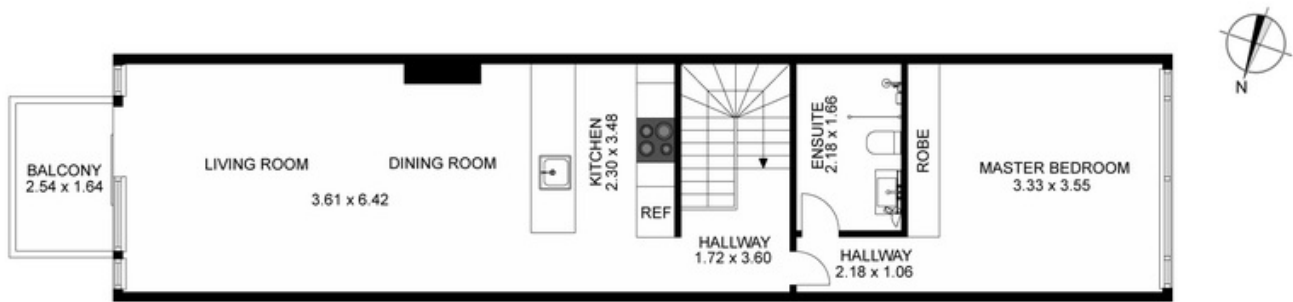
**[rwebay.com.au/3619035](http://rwebay.com.au/3619035)**

Luke McDonnell 0418 844 110

Greg McKinley 0412 044 822

**Proudly Richardson&Wrench**

Richardson & Wrench Elizabeth Bay / Potts Point  
02 8356 2700



TOP FLOOR



GROUND FLOOR

**R&W**

915/2 ELIZABETH BAY RD

Plans shown are for presentation purposes only and are not part of any legal document or title and are subject to errors, omissions, inaccuracies and they should not be used as the sole and/or accurate reference for purchasing decision. Interested parties should make their own inquiries using other sources supplied. Dimensions in length and width are approximate.