



803/9-15 Bayswater Road POTTS POINT, NSW

1 bed | 1 bath | 1 car

R&W

Offering a breathtaking backdrop of Sydney's CBD from every room above the cosmopolitan neighbourhood of Potts Point, this exclusive and spacious one-bedroom apartment offers sophisticated contemporary living with art deco charm.

- * Breathtaking city skyline views by day and night
 - * Pet friendly building with daytime concierge services
 - * Spacious entertaining areas, open plan living
 - * Dining area adjoins stone integrated kitchen,
 - * Huge island bench, plenty storage/bench space
- For furniture design tool copy and paste this link - ht...

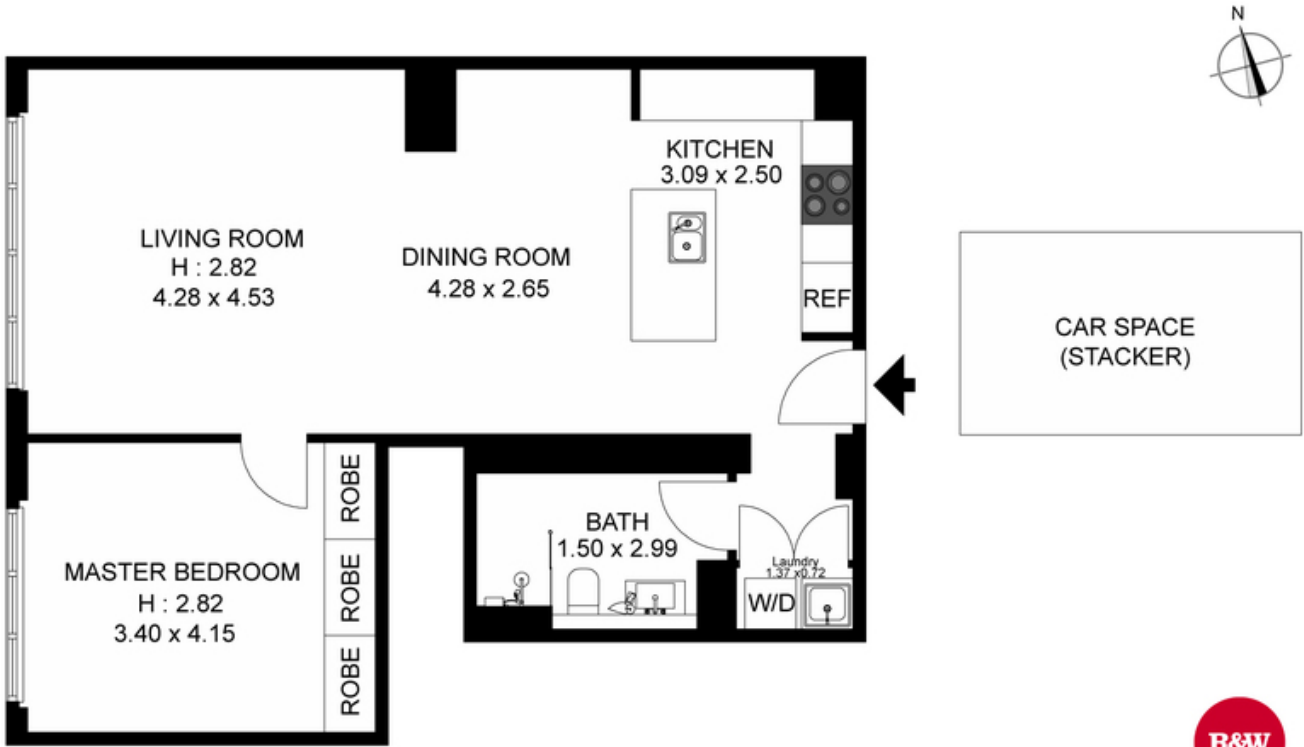
rwebay.com.au/3644679

Angelo Bouras 0401 658 653

Luke McDonnell 0418 844 110

Proudly Richardson&Wrench

Richardson & Wrench Elizabeth Bay / Potts Point
02 8356 2700



9-15 BAYSWATER ROAD, POTTS POINT



Plans shown are for presentation purposes only and are not part of any legal document or title and are subject to errors, omissions, inaccuracies and they should not be used as the sole and/or accurate reference for purchasing decision. Interested parties should make their own inquiries using other sources supplied. Dimensions in length and width are approximate.

Every precaution has been taken to establish accuracy of the information in this brochure but does not constitute any representation by the vendor or agent.

