



140 Victoria Street POTTS POINT, NSW

3 bed | 4 bath

R&W

- * Huge opportunity for remodelling into contemporary home
- * Zoned mixed use. Massive scope for use as business or dining premises
- * Exciting development prospect (STCA)
- * Excellent street frontage with unique private garden entrance
- * Character living spaces with original floorboards and features
- * Dual access from Victoria St and Earl St
- * Expansive floorplan set over 3 large levels
- * 360-degree rooftop views over district to CBD

rwebay.com.au/3707119

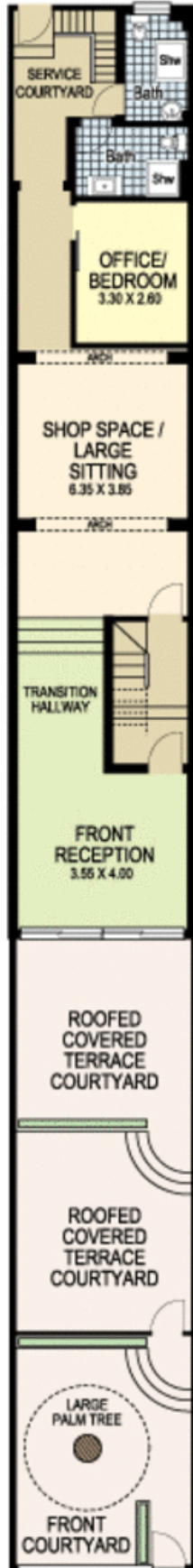
Jason Boon 0418 671 494

Geoff Cox 0418 231 004

Proudly Richardson&Wrench

Richardson & Wrench Elizabeth Bay / Potts Point
02 8356 2700

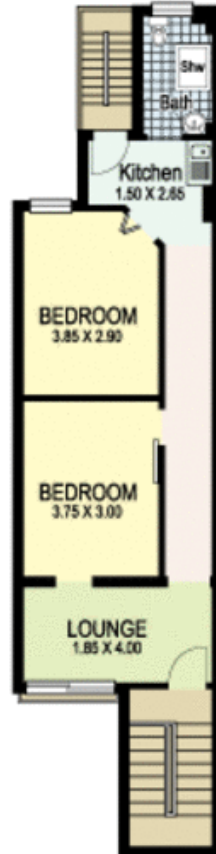
EARL STREET ENTRY



Ground Floor



First Floor



Second Floor



Roof Deck



140 Victoria Street POTTS POINT

R&W

Elizabeth Bay / Potts Point
8356 2700

Plans shown are for presentation purposes only and are not part of any legal document or file and are subject to errors, omissions, inaccuracies and they should not be used as the sole and/or accurate reference for purchasing decision. Interested parties should make their own inquiries using other sources supplied. Dimensions in length and width are approximate. Illustration by R&W 0411125500