



59 Victoria Street POTTS POINT, NSW

6 bed | 4 bath | 2 car

Pure luxury in every way (space, style, history, locati...

R&W

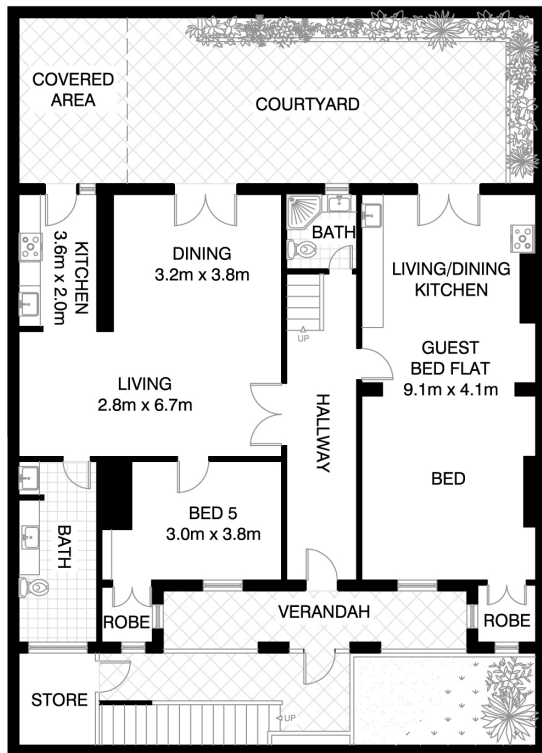
rwebay.com.au/3727914

Jason Boon 0418 671 494

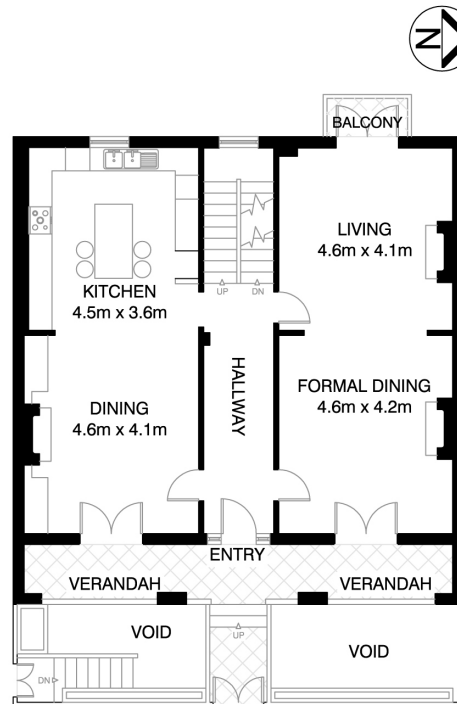
Geoff Cox 0418 231 004

Proudly Richardson&Wrench

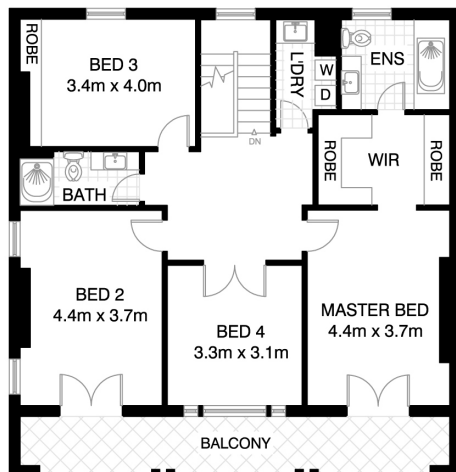
Richardson & Wrench Elizabeth Bay / Potts Point
02 8356 2700



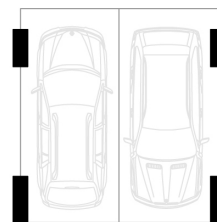
LOWER LEVEL



GROUND FLOOR



FIRST FLOOR



SECURE CAR SPACE
5.5m x 5.1m
(AT 73 VICTORIA STREET)

POTTS POINT 59 VICTORIA STREET



*PLANS SHOWN ONLY INDICATIVE OF LAYOUT. DIMENSIONS ARE APPROXIMATE.

Floor plan supplied by V-Mark Design Pty Ltd. This floor plan is provided for indicative purposes only.

Measurements are approximate and not to scale. The vendor, agency and supplier will accept no liability for its accuracy. Interested parties are advised to make their own independent enquiries.