



46/4 Ward Avenue ELIZABETH BAY, NSW

1 bed | 1 bath

R&W

- * Open plan kitchen and spacious L-shaped living/dining room
- * CaesarStone benchtops, gas stainless steel Smeg appliances
- * Integrated dishwasher, stylish timber ceiling fan, gas heating
- * Bathed in natural light with superb elevated district outlook
- * Bedroom with Sisal carpet, built-in robe and ensuite bathroom
- * Bright bathroom with full-length bathtub and shower facilities
- * Video security entrance, 2 lift access (passenger and goods lifts), rare pet-friendly building

[rwebay.com.au/3739673](https://www.rwebay.com.au/3739673)

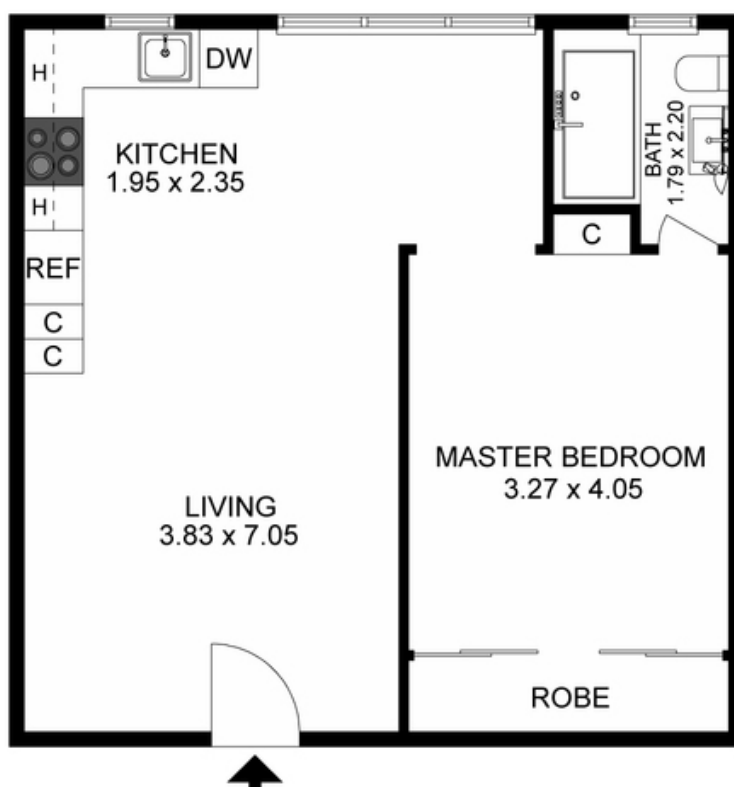
Penny Timothy 0418 546 500

Greg McKinley 0412 044 822

Angelo Bouras 0401 658 653

Proudly Richardson&Wrench

Richardson & Wrench Elizabeth Bay / Potts Point
02 8356 2700



46/4 WARD AVENUE, ELIZABETH BAY

Plans shown are for presentation purposes only and are not part of any legal document or title and are subject to errors, omissions, inaccuracies and they should not be used as the sole and/or accurate reference for purchasing decision. Interested parties should make their own inquiries using other sources supplied. Dimensions in length and width are approximate.