



## 3/2 St Neot Avenue POTTS POINT, NSW

2 bed | 1 bath | 1 car

Elegant two bedroom plus study apartment in one of the area's most sought after 1930's buildings. Situated on the first floor, the apartment benefits from fabulous presentation, great natural light and privacy.

Accommodation includes an entry hall, two double bedrooms, a large new kitchen (with gas, stainless steel appliances, dishwasher), bathroom, lounge with Bay windows and a separate study room.

With an easy walk to both the CBD and the areas finest ...

# R&W

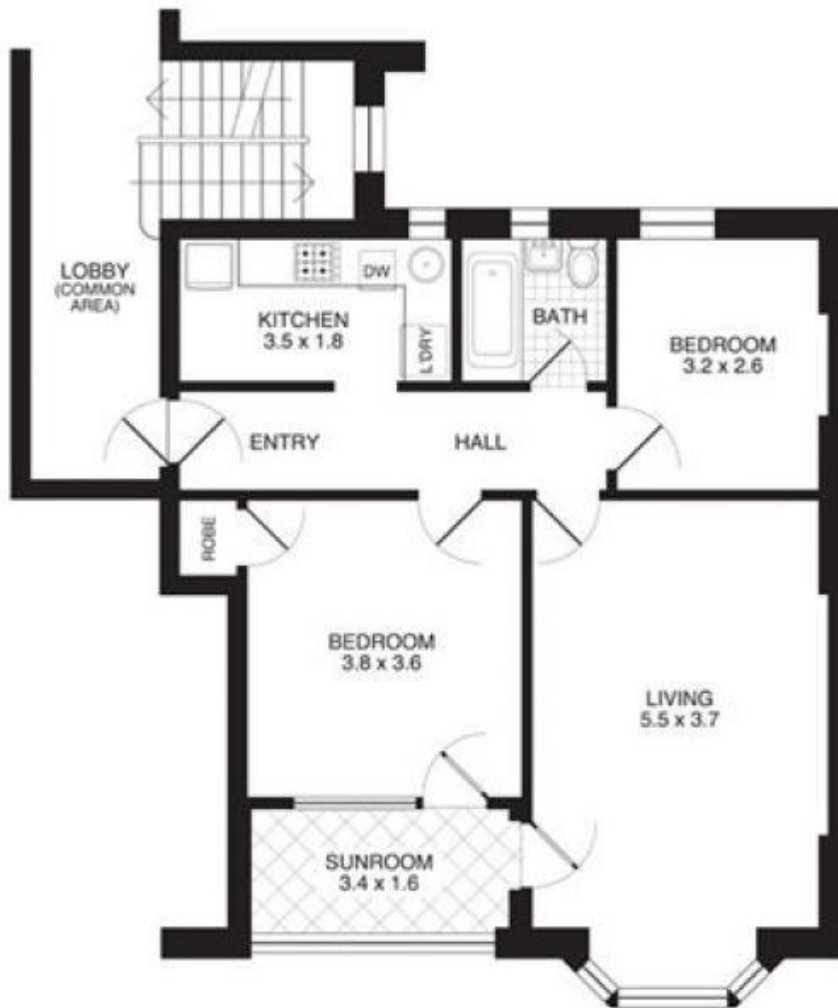
[rwebay.com.au/3745653](http://rwebay.com.au/3745653)

R&W Leasing 02 8356 2700

**Proudly Richardson&Wrench**

Richardson & Wrench Elizabeth Bay / Potts Point  
02 8356 2700

APARTMENT 3/2 ST NEOT AVENUE  
POTTS POINT



E&OE This plan is for illustrative purposes only and dimensions are approximate. It does not constitute part of any legal document or commercial contract for the sale or lease of this property.  
COPYRIGHT 2007 PROMOPLANS 02 9572 7111

FLOOR PLAN

Greg McKinley 0412 044 822

RICHARDSON & WRENCH  
Elizabeth Bay/Potts Point

Phone 8356 2700

Fax 8356 2799

gmckinley@rwebay.com.au  
www.rwebay.com.au