



## 68 Brougham Street POTTS POINT, NSW

2 bed | 1 bath

**R&W**

- ? Designer renovation with meticulous attention to detail
- ? Currently 2-level home w scope for extension to a third level (architects plans provided) (STCA)
- ? Tasteful dark wooden floorboards in living areas
- ? Exquisite stone tiles in kitchen, LED downlights throughout
- ? Kitchen w gas, integrated appliances, stainless steel benches, polished concrete tiles
- ? Paved Mexican terracotta backyard/courtyard, a lovely private space

[rwebay.com.au/3758972](http://rwebay.com.au/3758972)

Jason Boon 0418 671 494

Geoff Cox 0418 231 004

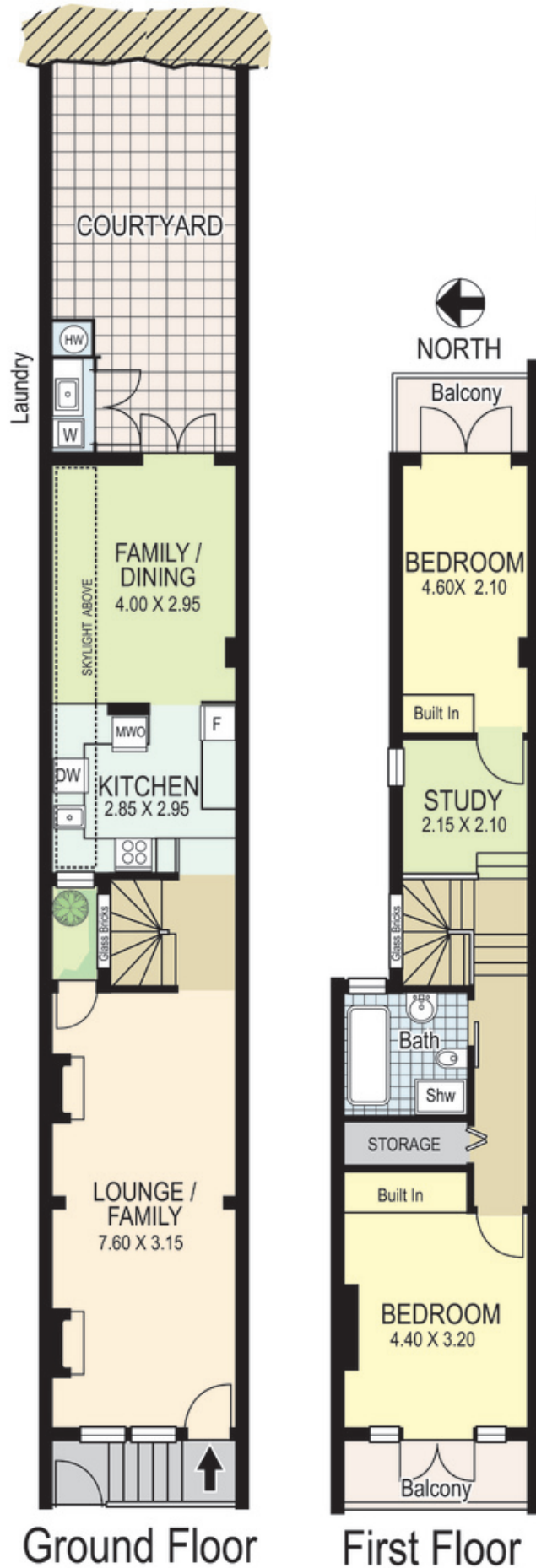
**Proudly Richardson&Wrench**

Richardson & Wrench Elizabeth Bay / Potts Point  
02 8356 2700

**R&W**

Elizabeth Bay / Potts Point  
8356 2700

## 68 Brougham Street POTTS POINT



Plans shown are for presentation purposes only and are not part of any legal document or title and are subject to errors, omissions inaccuracies and they should not be used as the sole and/or accurate reference for purchasing decision. Interested parties should make their own inquiries using other sources supplied. Dimensions in length and width are approximate. Illustration by Raoul Isidro 0411128500

**R&W**