



12/2 Ward Avenue ELIZABETH BAY, NSW

2 bed | 1 bath

R&W

This sunny North-East facing apartment enjoys a quiet and elevated outlook over Lawrence Hargraves Reserve and the leafy cosmopolitan locale. Bright and airy in a character small corner block only steps away to trendy Organic Food & Farmers Markets, as well as boutiques shops, public transport and Rushcutters Bay Marina.

- *Pet friendly building STSA
- * Timeless comfort in a top floor, corner position
- * Open plan living/dining room, light-filled flowing floor plan

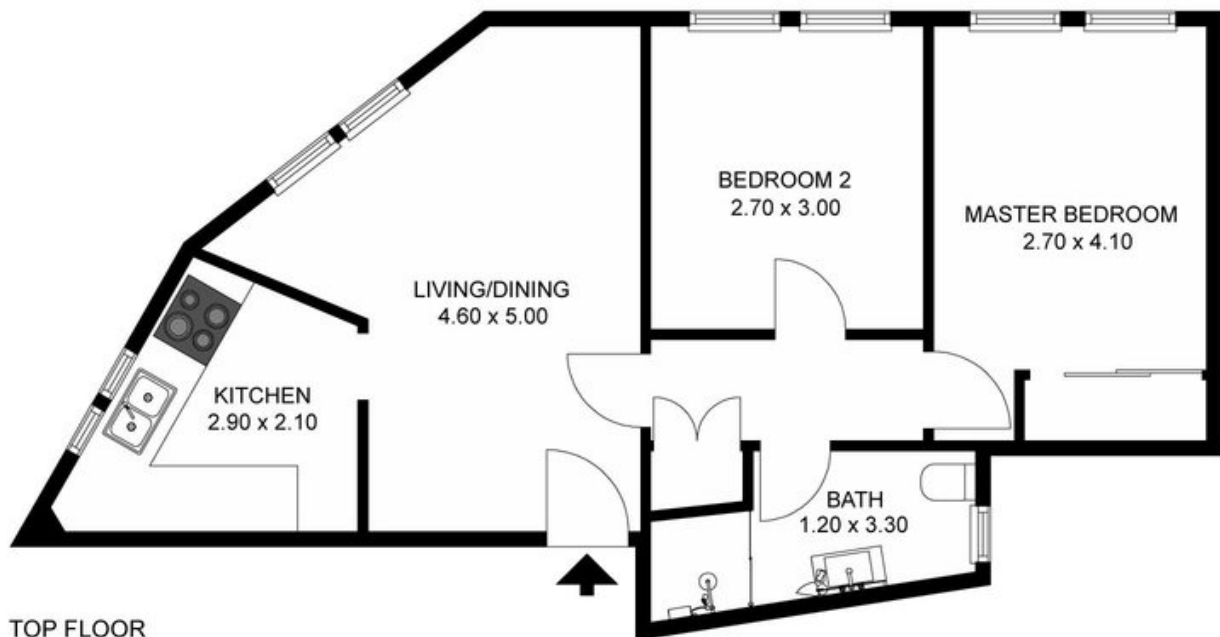
rwebay.com.au/3785945

Angelo Bouras 0401 658 653

Penny Timothy 0418 546 500

Proudly Richardson&Wrench

Richardson & Wrench Elizabeth Bay / Potts Point
02 8356 2700



TOP FLOOR



12/2 WARD AVENUE, ELIZABETH BAY

Plans shown are for presentation purposes only and are not part of any legal document or title and are subject to errors, omissions, inaccuracies and they should not be used as the sole and/or accurate reference for purchasing decision. Interested parties should make their own inquiries using other sources supplied. Dimensions in length and width are approximate.