



3/41B Elizabeth Bay Road ELIZABETH BAY, NSW

1 bed | 1 bath

R&W

Imaginatively designed & offering approx. 75 sqm of private space flowing indoors and out, this stylish and very spacious apartment is very light & welcoming. The loft style 2 level accommodation includes lift access to 1st floor N-W position in modern security block of just 10. Here you'll step into easy living with open plan dining and double height living leading out to a loggia style balcony, Caesar stone/gas kitchen with dishwasher and stainless-steel appliances, large bedroom with built ins and loggia-deck, tiled bathroom, internal laundry, plantation shutters, R/C air conditioning.

A short walk to restaurants, shops, nightlife, transpor...

rwebay.com.au/3802192

Andrew Hoggett 0412 208 614

Greg McKinley 0412 044 822

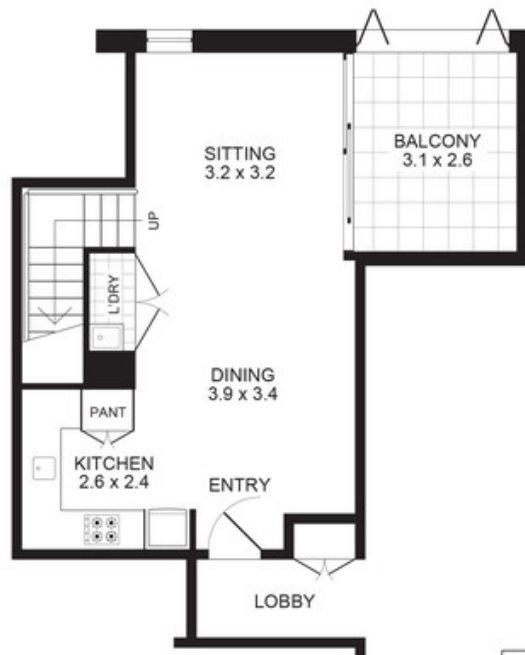
Proudly Richardson&Wrench

Richardson & Wrench Elizabeth Bay / Potts Point
02 8356 2700

APARTMENT 3/41B ELIZABETH BAY ROAD
ELIZABETH BAY



LEVEL TWO
Scale 1cm = 1m (approx)



LEVEL ONE
Scale 1cm = 1m (approx)



E&OE This plan is for illustrative purposes only and dimensions are approximate. It does not constitute part of any legal document or commercial contract for the sale or lease of this property.
COPYRIGHT 2008 PROMOPLANS 02 9572 7111

Andrew Hoggett 0412 208 614

RICHARDSON & WRENCH
Elizabeth Bay/Potts Point

Phone 8356 2700
Fax 8356 2799

www.rwebay.com.au