



87/5-7 Esplanade ELIZABETH BAY, NSW

1 bed | 1 bath | 1 car

R&W

Perfectly positioned on the water's edge of Elizabeth Bay, this bright, top floor apartment is located in Karingal, a well-maintained waterfront building across from Beare Park.

rwebay.com.au/3823478

Angelo Bouras 0401 658 653

Luke McDonnell 0418 844 110

* Top floor position with lift access

* Strata titled building with pool and BBQ area and laundry facilities

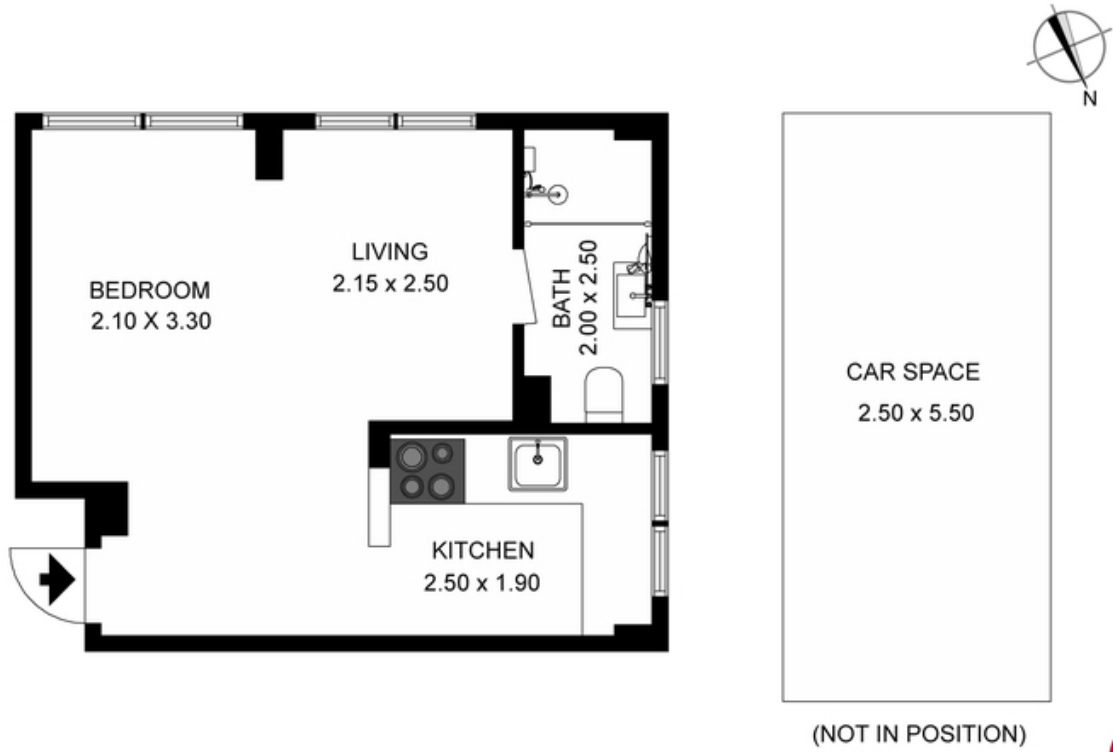
* Wrap around windows, plenty of light

* Updated kitchen with breakfast bench

* Ideal city pad or ready renter

Proudly Richardson&Wrench

Richardson & Wrench Elizabeth Bay / Potts Point
02 8356 2700



87/5-7 ESPLANDE, ELIZABETH BAY

Plans shown are for presentation purposes only and are not part of any legal document or title and are subject to errors, omissions, inaccuracies and they should not be used as the sole and/or accurate reference for purchasing decision. Interested parties should make their own inquiries using other sources supplied. Dimensions in length and width are approximate.

