



803/32-40 Sir John Young Crescent WOOLLOOMOOLOO, NSW 2 bed | 2 bath

R&W

SOLD BY NICHOLAS TSAUCIS 0419 777 717 & ANDREW HOGGETT 0412 208 614 - High above the gateway to the CBD and the Harbour, this bright airy apartment offers a preferred north-west corner position in a tightly held modern landmark parkside/harbourside security tower. With fascinating views over Domain Park, the Art Gallery & city skyline, this ideal city pad???s 270 degree panorama includes the Bridge, Woolloomooloo Bay and up the Harbour. Centrally located, it???s within easy walking distance of the city centre, several parks, transport choices, fine dining at The Wharf and fashionable Potts Point shops/cafes.

...

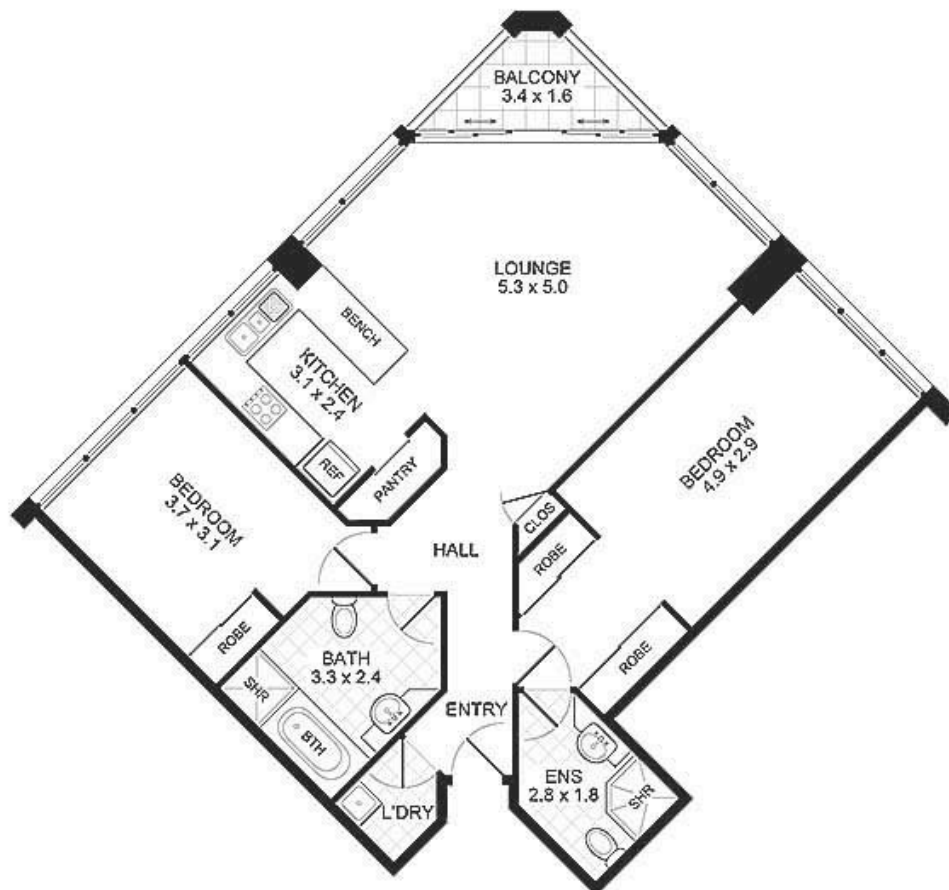
rwebay.com.au/607039

R&W Elizabeth Bay Potts Point
Andrew Hoggett 0412 208 614

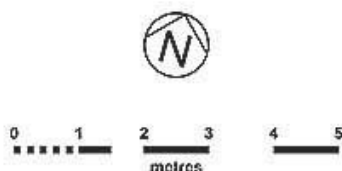
Proudly Richardson&Wrench

Richardson & Wrench Elizabeth Bay / Potts Point
02 8356 2700

APARTMENT 802/22-40 SIR JOHN YOUNG CRESCENT WOOLLOOMOOLOO



FLOOR PLAN
Scale 1cm = 1m (approx)



PROMOPLANS ...adding REAL value!

E&OE This plan is for illustrative purposes only and dimensions are approximate. It does not constitute part of any legal document or commercial contract for the sale or lease of this property.
COPYRIGHT © 2012 PROMOPLANS 02 9572 7111
Warning: Usage restricted under the Copyright Act

CONTACT:

Andrew Hoggett
Phone 8356 2700 Mobile 0412 208 614
Email ahoggett@rwebay.com.au

Nicholas Tsoucis
Phone 8356 2700 Mobile 0419 777 717
Email nicholas@rwebay.com.au

R&W

Elizabeth Bay / Potts Point
8356 2700