



434/6 Cowper Wharf Road WOOLLOOMOOLOO, NSW

2 bed | 2 bath | 1 car

R&W

A waterfront private haven with intimate harbour views and the idyllic sounds of the bay lapping below, this elegant contemporary apartment occupies a prime east wing position in Sydney's most successful wharf conversion. Retaining its architectural integrity and c.1915 heritage features, the much-admired landmark Finger Wharf now offers a luxurious 21st century resort lifestyle with 24-hour on site security and Sydney's most fashionable boardwalk restaurant scene. Within walking distance of Potts Point or CBD shopping, business, entertainment and transport choices. Live the dream!

...

rwebay.com.au/871746

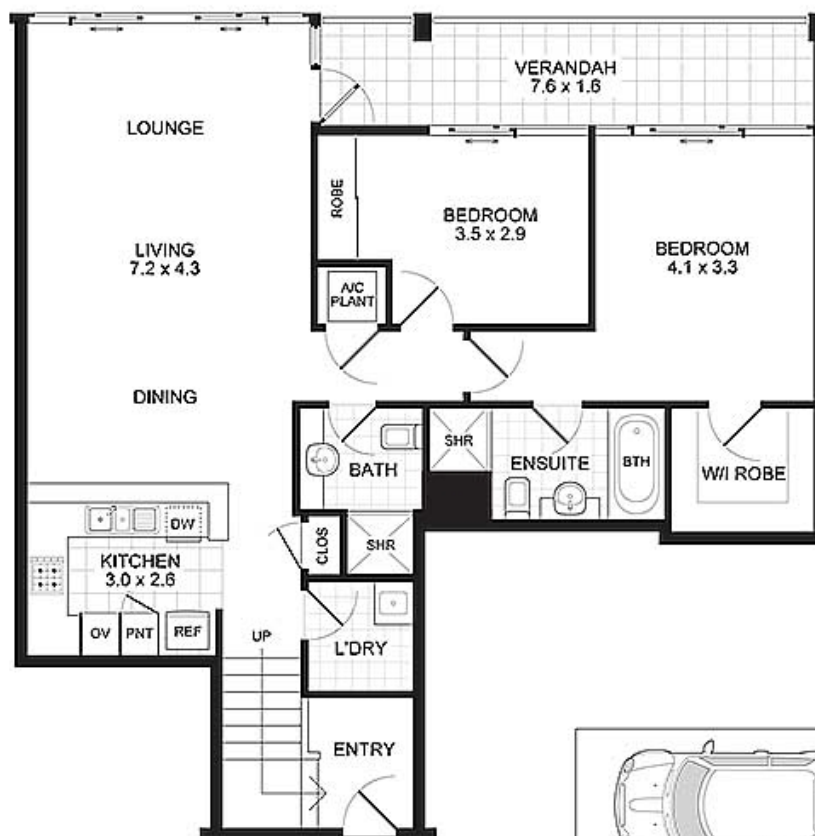
Geoff Cox 0418 231 004

Jason Boon 0418 671 494

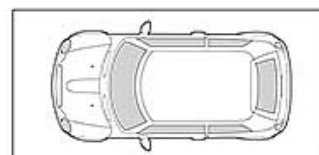
Proudly Richardson&Wrench

Richardson & Wrench Elizabeth Bay / Potts Point
02 8356 2700

APARTMENT 434/6 COWPER WHARF ROAD WOOLLOOMOOLOO



FLOOR PLAN
Scale 1cm = 1m (approx)



SECURITY PARKING

GARAGE
Not to Scale



0 1 2 3 4 5
metres

PROMOPLANS ...adding REAL value!

E&OE This plan is for illustrative purposes only and dimensions are approximate. It does not constitute part of any legal document or commercial contract for the sale or lease of this property.

COPYRIGHT © 2013 PROMOPLANS 02 9572 7111
Warning: Usage restricted under the Copyright Act

Contact

Jason Boon
Phone: 8356 2700 Mobile: 0418 671 494
Email: jboon@rwebay.com.au

Geoff Cox
Phone: 8356 2734 Mobile: 0418 231 004
Email: gcox@rwebay.com.au

R&W

Elizabeth Bay / Potts Point
8356 2700