



17/1 Greenknowe Avenue POTTS POINT, NSW

3 bed | 2 bath | 1 car

R&W

North facing and creatively rebuilt by Burley Katon Halliday and George Freedman, this oversized penthouse offers glamorous New York inspired living in the heart of Sydney's uber chic Potts Point. Enjoying prestige, security and quiet privacy atop one of the grandest classic landmark buildings, few compare with the sophistication of this streamlined apartment's versatile layout. Opening to two sunny private balconies with views including the CBD and Harbour, this state of the art haven offers a wow factor fusion of walnut, oak, leather, stone, steel, glass & technology. Simply stunning!

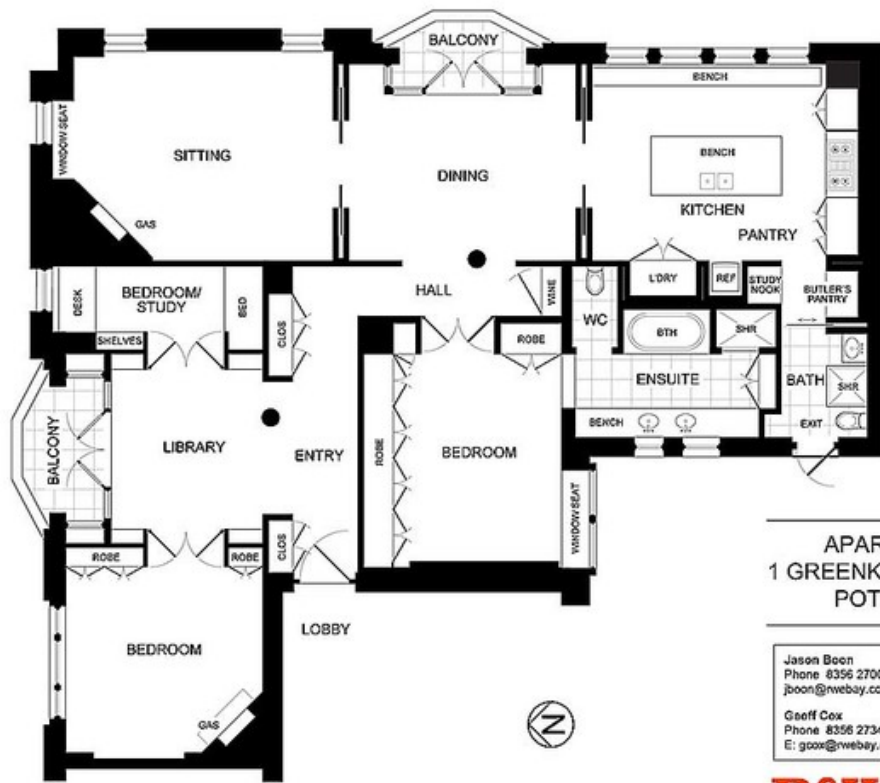
rwebay.com.au/1017575

Jason Boon 0418 671 494

Geoff Cox 0418 231 004

Proudly Richardson&Wrench

Richardson & Wrench Elizabeth Bay / Potts Point
02 8356 2700



APARTMENT 17
1 GREENKNOVE AVENUE
POTTS POINT

Jason Boon
Phone 8356 2700 Mobile 0418 671 494
jboon@rwebay.com.au www.rwebay.com.au

Geoff Cox
Phone 8356 2734 Mobile 0418 231 004
E: gcox@rwebay.com.au

R&W Elizabeth Bay
Potts Point