



11/42 Bayswater Road RUSHCUTTERS BAY, NSW

1 bed | 1 bath

R&W

A rare one-bedroom city pad offering approx 36 sqm of comfort, character and quiet convenience, it's light and airy, on the 3rd floor of Coonana, a circa 1930's security block of just 12. Tucked away in a leafy tree-lined residential enclave consisting of a well maintained group of strata apartment buildings, the mews-style classic complex is entered via a security-gated leafy walkway/driveway with dual street access. Updated over the years yet offering further potential for contemporary improvements, this city pad is an ideal entry point to a trendy cosmopolitan locale.

* Ready to enjoy or revamp to suit - add this charact...

rwebay.com.au/1043500

R&W Elizabeth Bay Potts Point

Proudly Richardson & Wrench

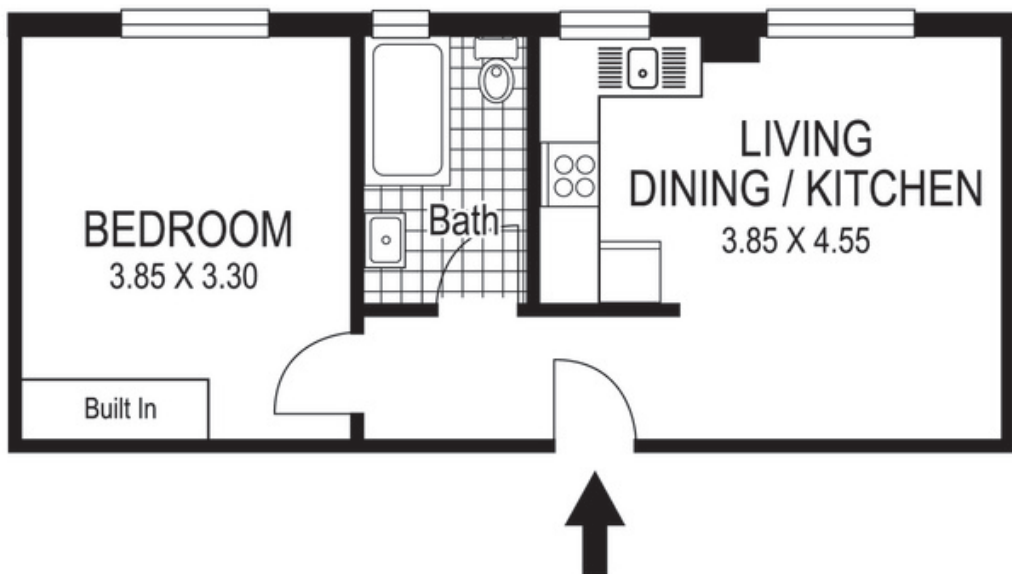
Richardson & Wrench Elizabeth Bay / Potts Point
02 8356 2700

R&W | The best reputation
in real estate
Elizabeth Bay/Potts Point

Contact:
Nicholas Tsaucis
0419 777 717



NORTH



11 / 42 Bayswater Road
RUSHCUTTERS BAY
"COONANA"

Plans shown are for presentation purposes only and are not part of any legal document or title and are subject to errors, omissions, inaccuracies and they should not be used as sole and/or accurate reference for purchasing decision. Interested parties should make their own enquiries using other sources supplied.

© Dimensions shown on plans are approximate values in L x W
Colour formulas and area coding are subject to copyright
Illustration by Raoul Isidoro 04111 28500

Every precaution has been taken to establish accuracy of the information in this brochure but does not constitute any representation by the vendor or agent.

R&W