



18/84-90 McLachlan Avenue RUSHCUTTERS BAY, NSW

2 bed | 1.5 bath | 1 car



FIRST OPEN HOUSE THURSDAY 24TH OCTOBER

rwebay.com.au/1106403

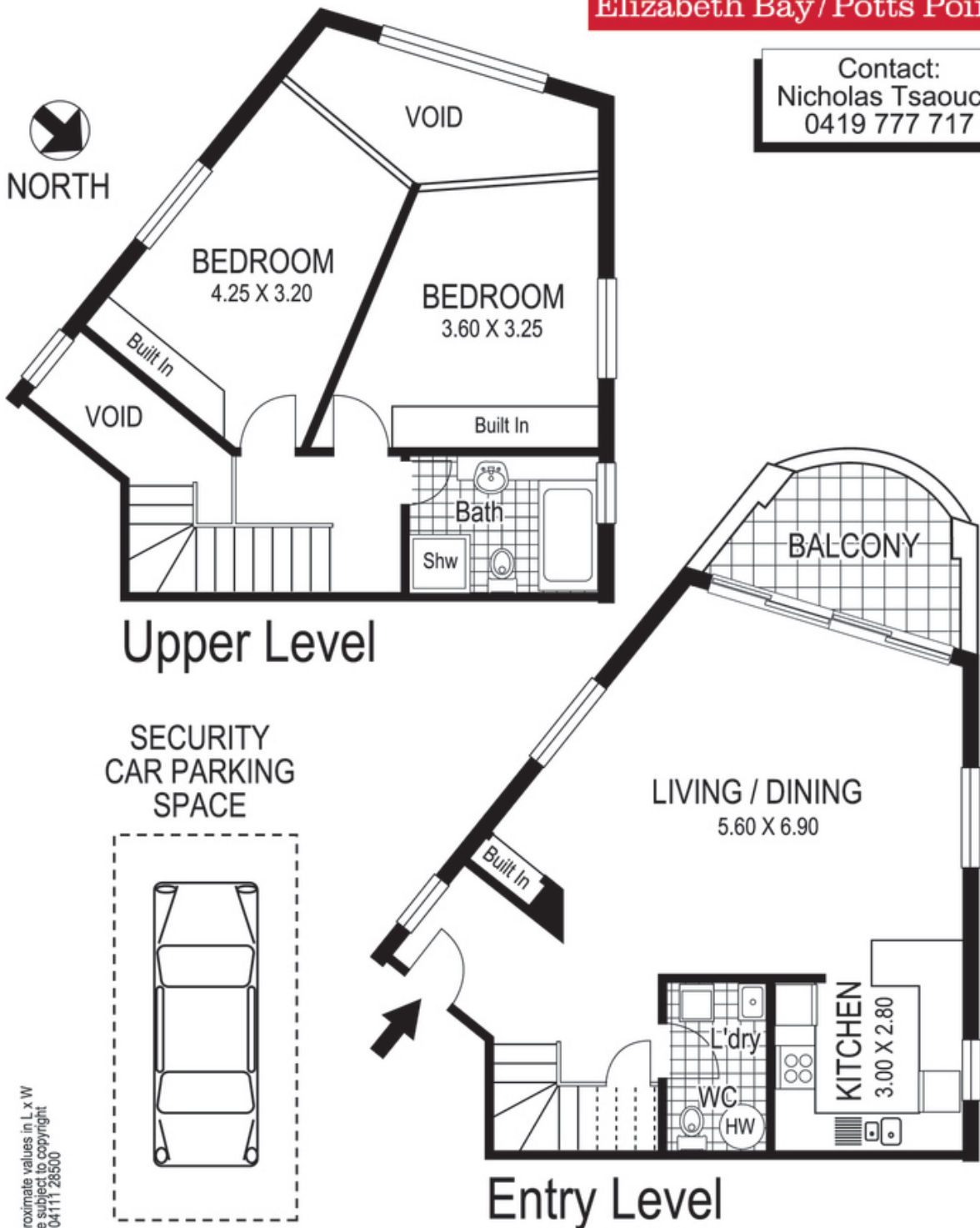
R&W Elizabeth Bay Potts Point

Proudly Richardson & Wrench

Richardson & Wrench Elizabeth Bay / Potts Point
02 8356 2700

- * Bright, well presented and ready to move in or rent out
- * Spacious open living/dining areas lead out to bow-fronted balcony
- * Open-plan kitchen with dishwasher, ceramic hob, oven, stone floor
- * 2 generous loft-style bedrooms, each with built in wardrobe
- * All white main bathroom with porthole window, deep bath, sep shr
- * Guest wc/internal laundry, high ceilings, new carpet...

Contact:
Nicholas Tsaoucis
0419 777 717



© Dimensions shown on plans are approximate values in L x W
Colour formulas and area coding are subject to copyright
Illustration by Raoul Isidro 04111 28500

18 / 84-90 McLachlan Avenue
DARLINGHURST
"THE ROYALTON"

Plans shown are for presentation purposes and are not part of any legal document or title and are subject to errors, omissions, inaccuracies and should not be used as sole and accurate reference. Interested parties should make their own enquiries using other sources supplied.