



3/18 Springfield Avenue POTTS POINT, NSW

| 1 bath

R&W

Combining its Art Deco origins with New York inspiration, this unique studio apartment was completely reinvented for stylish contemporary living. Functional in its layout and luxurious in all aspects, this perfectly proportioned apartment with separate bed area is positioned on the North side of Regent's Court, a circa 1930's strata title security building

Features include:

Spacious open plan living/dining with high ceilings and sun-filled interior

Cleverly integrated kitchen with stone bench tops a...

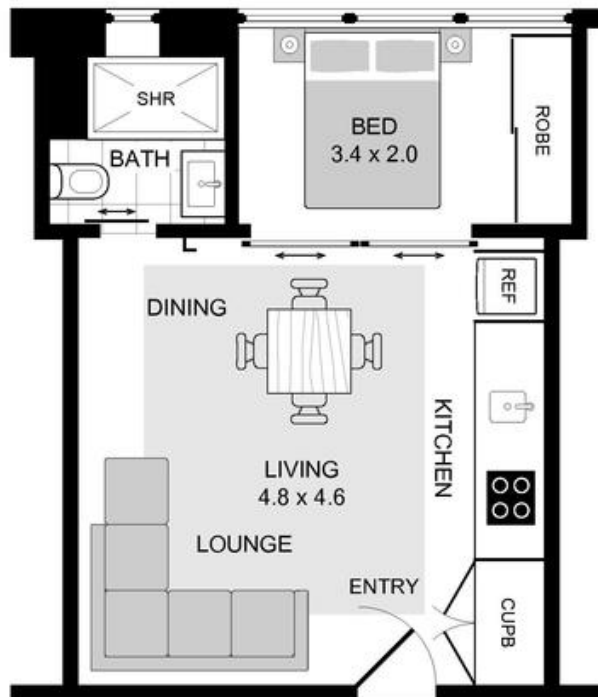
rwebay.com.au/1463512

R&W Elizabeth Bay Potts Point

Proudly Richardson & Wrench

Richardson & Wrench Elizabeth Bay / Potts Point
02 8356 2700

APARTMENT 3/18 SPRINGFIELD AVENUE
POTTS POINT



GROUND FLOOR



CONTACT:

John Hoggett
Phone 8356 2700 Mobile 0431 411 004
Email jhoggett@rwebay.com.au

PROMOPLANS ...adding REAL value!

E&OE This plan is for illustrative purposes only and dimensions are approximate. It does not constitute part of any legal document or commercial contract for the sale or lease of this property.

COPYRIGHT © 2014 PROMOPLANS 02 9572 7111
Warning: Usage restricted under the Copyright Act

R&W

Elizabeth Bay | Potts Point
8356 2700