



2/20 Macleay Street POTTS POINT, NSW

2 bed | 1 bath

Tucked away in the north east corner for peace and privacy, this designer home has undergone a beautiful revamp that oozes contemporary glamour. Offering a rich colour pallet and exceptional quality, the home's interiors are perfectly balanced with its cosmopolitan surroundings. Configured for flawless flow from indoors to out, there is the added bonus of Harbour cameos from the full-width terrace. Exceptionally placed and spoilt for choice with lifestyle conveniences, the home is front and centre to local dining hotspots, specialty shopping and CBD access. It is a quick walk to Woolloomooloo Finger Wharf, Beare Park and the Harbour Foreshore.

...

R&W

rwebay.com.au/1467208

Jason Boon 0418 671 494

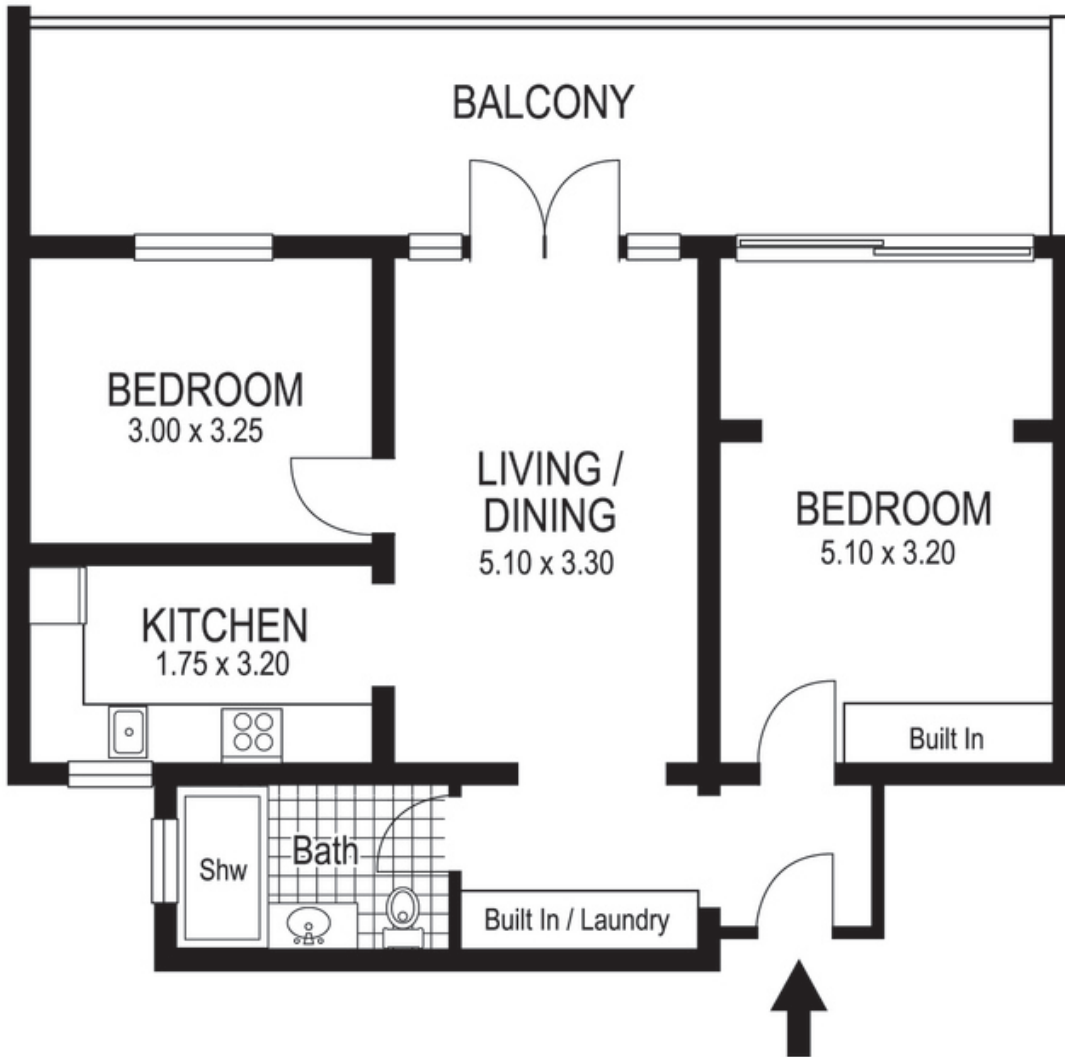
Luke McDonnell 0418 844 110

Proudly Richardson&Wrench

Richardson & Wrench Elizabeth Bay / Potts Point
02 8356 2700

Contact:
Jason Boon
0418 671 494

R&W | The best reputation
in real estate
Elizabeth Bay/Potts Point



© Dimensions shown on plans are approximate values in L x W
Colour formulas and area coding are subject to copyright
Illustration by Raoul Isidoro 04111 28500

2 / 20 Macleay Street POTTS POINT

Plans shown are for presentation purposes only and are not part of any legal document or title and are subject to errors, omissions, inaccuracies and they should not be used as sole and/or accurate reference for purchasing decision. Interested parties should make their own enquiries using other sources supplied.

Every precaution has been taken to establish accuracy of the information in this brochure but does not constitute any representation by the vendor or agent.

