



19/67 Macleay Street POTTS POINT, NSW

1 bed | 1 bath

Imaginatively designed to offer the perfect combination of style and private space flowing indoors and out, this strata title apartment is a rarely offered opportunity for an enviable inner city home, ideal for easy living and entertaining.

Features include:

- Open plan double height living leading out to an oversized partially covered terrace
- Modern kitchen with dishwasher comprising ample cupboard and bench space
- Loft style bedroom drawing in natural light from skyl...

R&W

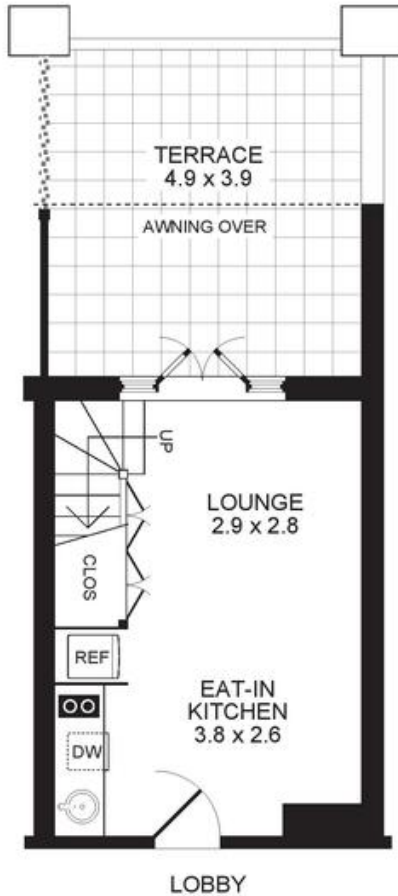
rwebay.com.au/1481074

R&W Elizabeth Bay Potts Point

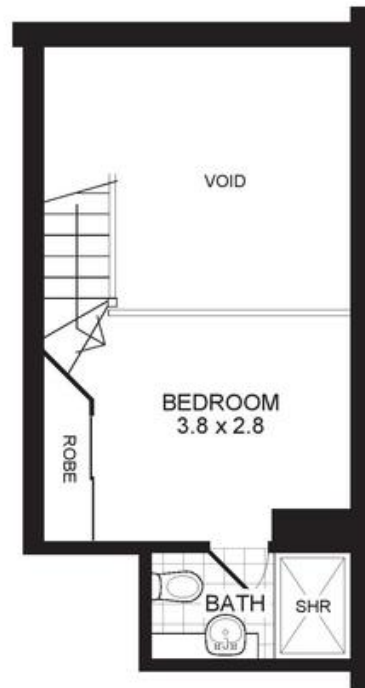
Proudly Richardson&Wrench

Richardson & Wrench Elizabeth Bay / Potts Point
02 8356 2700

APARTMENT 19/67 MACLEAY STREET
POTTS POINT



LEVEL ONE



LEVEL TWO



CONTACT:

John Hoggett
Phone 8356 2700 Mobile 0431 411 004
Email jhoggett@rwebay.com.au

PROMOPLANS ...adding REAL value!

E&OE This plan is for illustrative purposes only and dimensions are approximate. It does not constitute part of any legal document or commercial contract for the sale or lease of this property.

COPYRIGHT © 2014 PROMOPLANS 02 9572 7111
Warning: Usage restricted under the Copyright Act

R&W

Elizabeth Bay | Potts Point
8356 2700