



## 1602/73 Victoria Street POTTS POINT, NSW

2 bed | 2 bath | 1 car

# R&W

North-East corner positioned in the superbly maintained Hordern Place security tower, this spacious (92m<sup>2</sup> approx) & stylish apartment's iconic views are spell-binding both day and night. Presiding over the leafy locale and across Woolloomooloo Bay to the CBD, Bridge, Opera House and Harbour, here is a value-packed investment in lifestyle. Enjoying exclusivity, security and open plan living, this Harbourside city pad is quiet and private above the ever-popular neighbourhood.

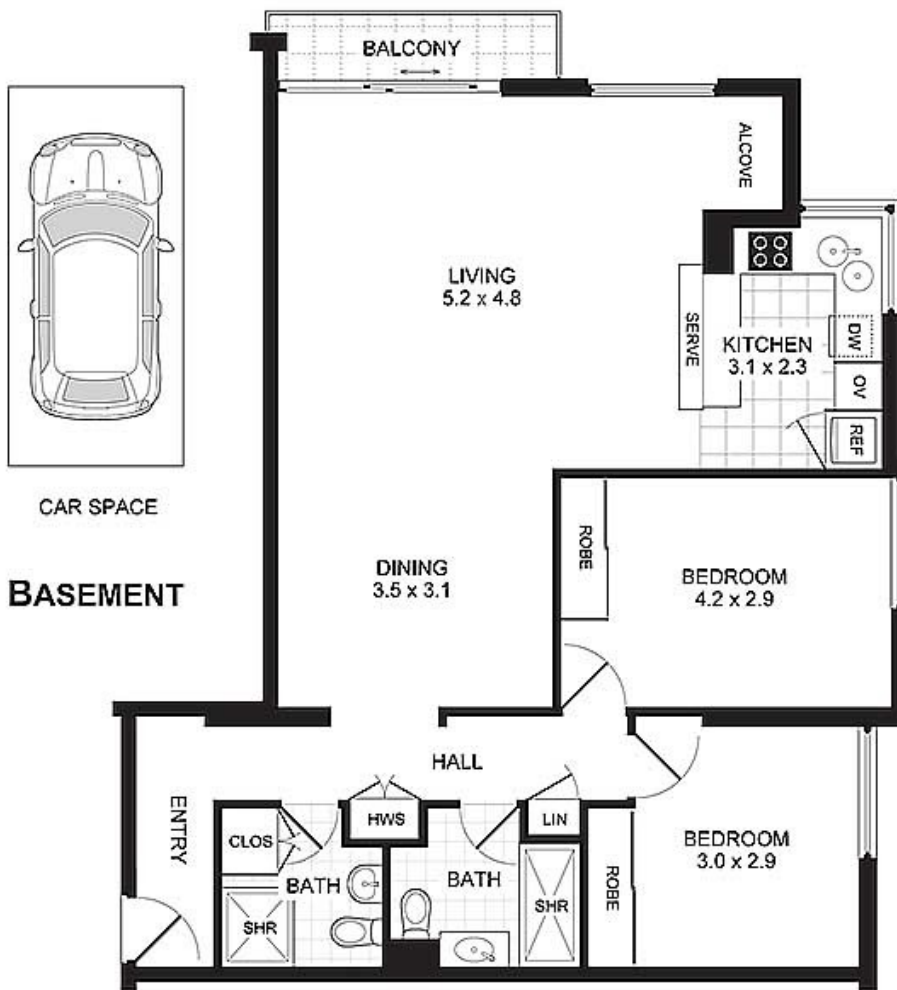
[rwebay.com.au/1488441](http://rwebay.com.au/1488441)

R&W Elizabeth Bay Potts Point  
Andrew Hoggett 0412 208 614

**Proudly Richardson&Wrench**

Richardson & Wrench Elizabeth Bay / Potts Point  
02 8356 2700

APARTMENT 1602/73 VICTORIA STREET  
POTTS POINT



FLOOR PLAN



**PROMOPLANS ...adding REAL value!**

ES&OE This plan is for illustrative purposes only and dimensions are approximate. It does not constitute part of any legal document or commercial contract for the sale or lease of this property.

COPYRIGHT © 2014 PROMOPLANS 02 9572 7111  
Warning: Usage restricted under the Copyright Act

CONTACT:

John Hoggett  
Phone 8356 2700 Mobile 0431 411 004  
Email [jhoggett@rwebay.com.au](mailto:jhoggett@rwebay.com.au)

Andrew Hoggett  
Phone 8356 2700 Mobile 0412 208 614  
Email [ahoggett@rwebay.com.au](mailto:ahoggett@rwebay.com.au)

**R&W**

Elizabeth Bay | Potts Point  
8356 2700