



29/67 Cowper Wharf Road WOOLLOOMOOLOO, NSW

2 bed | 2 bath | 1 car

R&W

- * Lift access, secure large car space, separate 5sqm storage cage
- * Large open plan living/dining room leads out to easterly private balcony
- * Good size kitchen with gas cooktop, rangehood, oven, dishwasher
- * 2 generous bedrooms with built-ins, master with balcony access
- * 2 bathrooms, master with ensuite, main bathroom with internal laundry
- * Shadowline ceilings, large areas of glass, carpeted f...

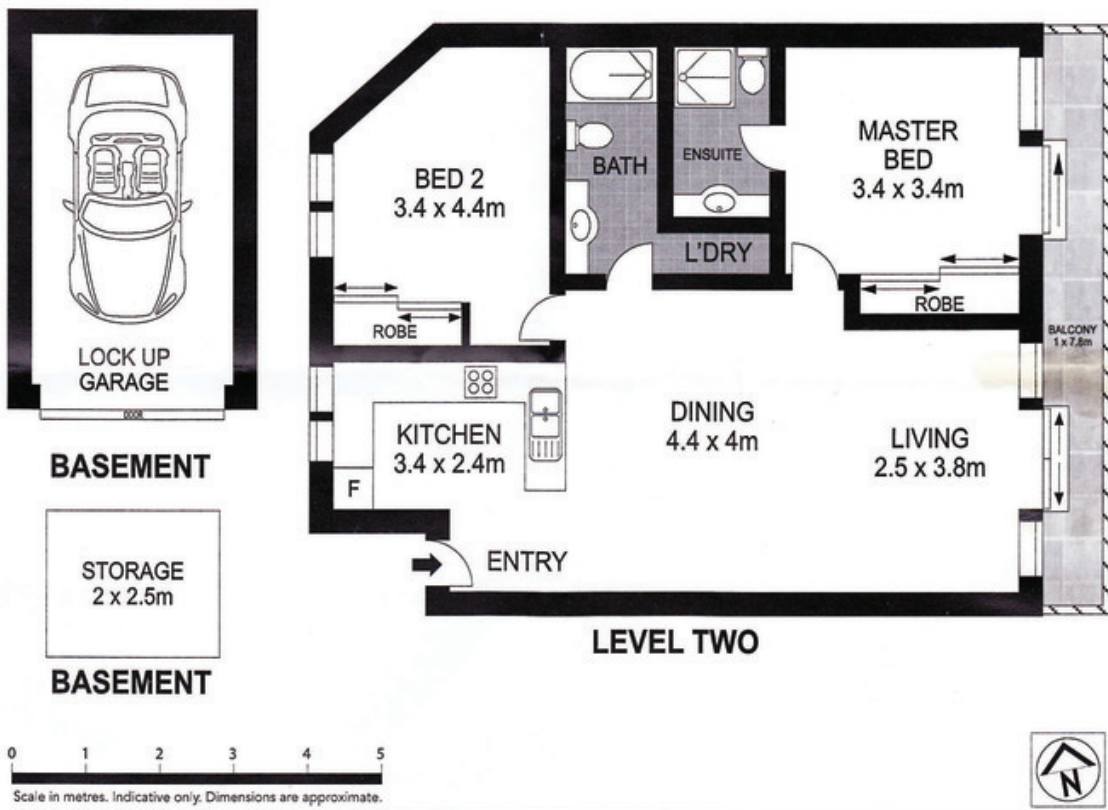
rwebay.com.au/1516081

Geoff Cox 0418 231 004

Jason Boon 0418 671 494

Proudly Richardson&Wrench

Richardson & Wrench Elizabeth Bay / Potts Point
02 8356 2700



Every precaution has been taken to establish accuracy of the information in this brochure but does not constitute any representation by the vendor or agent.

R&W