



82/103 Victoria Street POTTS POINT, NSW

1 bed | 1 bath | 1 car

R&W

* Level entry walkway from street to secure main lift lobby and level covered access with lift from security parking

* Apartment features central foyer area, spacious open dining and living zones with bi-folds to northerly viewdeck for perfect indoor/outdoor living

* CaesarStone open kitchen with breakfast island, Miele appliances (cooktop, main pyrolytic oven, steam oven, fully integrated dishwasher), Panasonic microwave, quality cabinetry, soft closing drawers, integrated fridge space

* Queen size bedroom with large window, ceiling fan, b...

rwebay.com.au/1516708

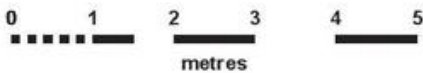
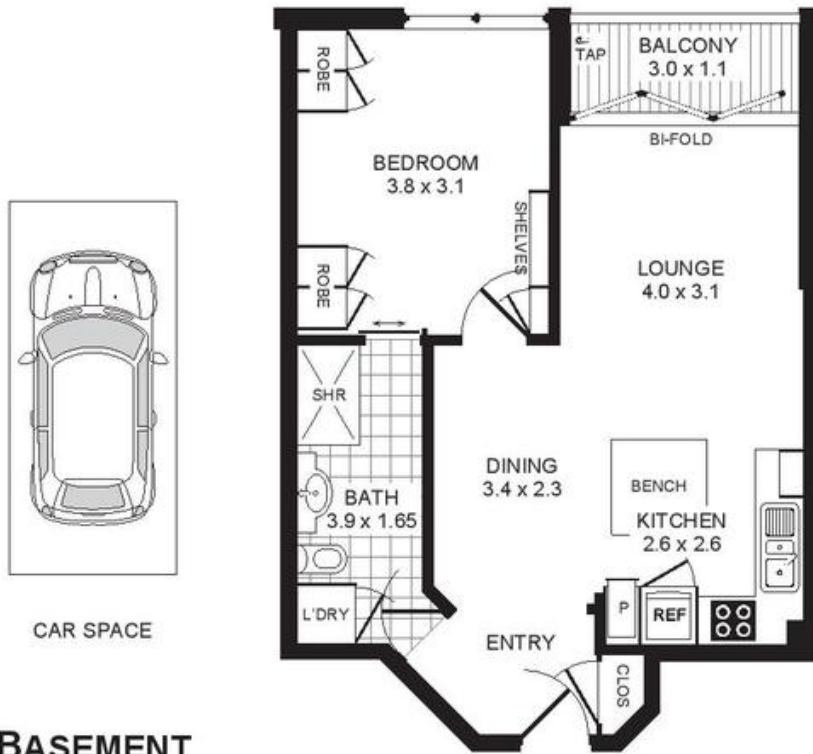
Jason Boon 0418 671 494

Geoff Cox 0418 231 004

Proudly Richardson&Wrench

Richardson & Wrench Elizabeth Bay / Potts Point
02 8356 2700

APARTMENT 82/103 VICTORIA STREET
POTTS POINT



PROMOPLANS ...adding REAL value!

E&OE This plan is for illustrative purposes only and dimensions are approximate. It does not constitute part of any legal document or commercial contract for the sale or lease of this property.

COPYRIGHT © 2013 PROMOPLANS 02 9572 7111
Warning: Usage restricted under the Copyright Act

Contact

Jason Boon

Phone: 8356 2700 Mobile: 0418 671 494
Email: jboon@rwebay.com.au

Geoff Cox

Phone: 8356 2734 Mobile: 0418 231 004
Email: gcox@rwebay.com.au

R&W

Elizabeth Bay | Potts Point
8356 2700