



8/34-36 Young Street REDFERN, NSW

3 bed | 2 bath | 2 car

Perfectly placed on the cusp of Surry Hills and Redfern, this ideal house alternative offers lifestyle and space topped off with a peaceful setting and a treetop outlook. Part of a boutique group of just 10 homes, the apartment is designed for a contemporary indoor/outdoor lifestyle and is suitable for executives, families and investors. In original yet great condition, choose to move in and keep as is or add your own creative touches if desired. There is also the added benefit of a double lock up garage. Surrounded by dynamic dining destinations, it is close to multiple green spaces, grocery shops, local schools, fashion boutiques and City transport.

...

R&W

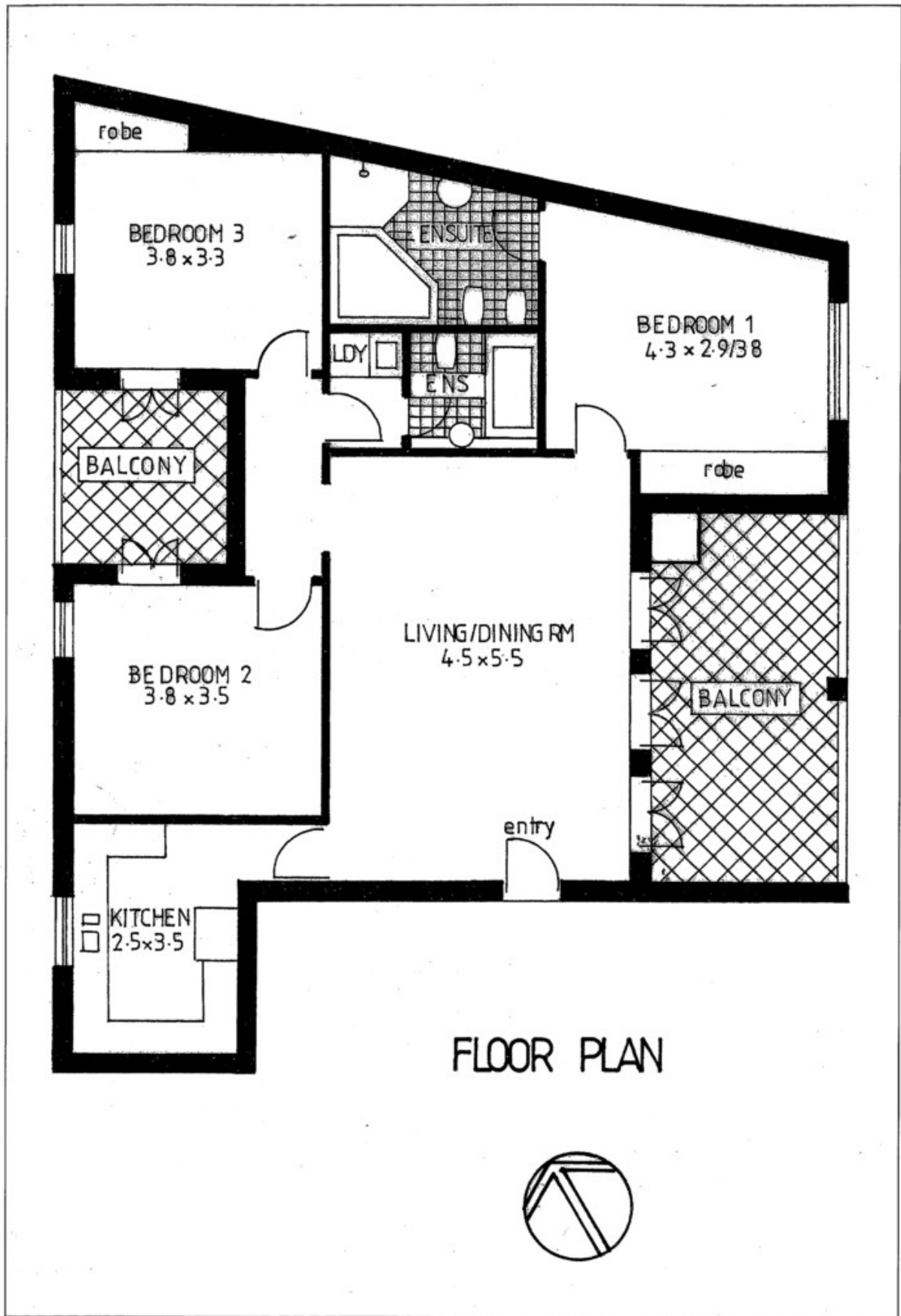
rwebay.com.au/1526555

Geoff Cox 0418 231 004

Jason Boon 0418 671 494

Proudly Richardson&Wrench

Richardson & Wrench Elizabeth Bay / Potts Point
02 8356 2700



Every precaution has been taken to establish accuracy of the information in this brochure but does not constitute any representation by the vendor or agent.

R&W