



7/95 Victoria Street POTTS POINT, NSW

2 bed | 1 bath | 1 car

Stylishly renovated and enjoying treetop outlooks, this house-sized private domain occupies a popular elevated position in a small security block of just 12. Adjoining the sought after Hordern Place security complex with its expansive garden-terraces, this spacious 2-storey apartment presents low maintenance living with smart modern finishes and plenty of natural light. Offering an ideal home or savvy investment within a landscaped secure setting in the fashionable northern part of leafy Victoria Street, this villa-style pet-friendly apartment is just footsteps to trendy cafes, boutiques, supermarkets, parks, train station and city buses.

...

R&W

rwebay.com.au/1533508

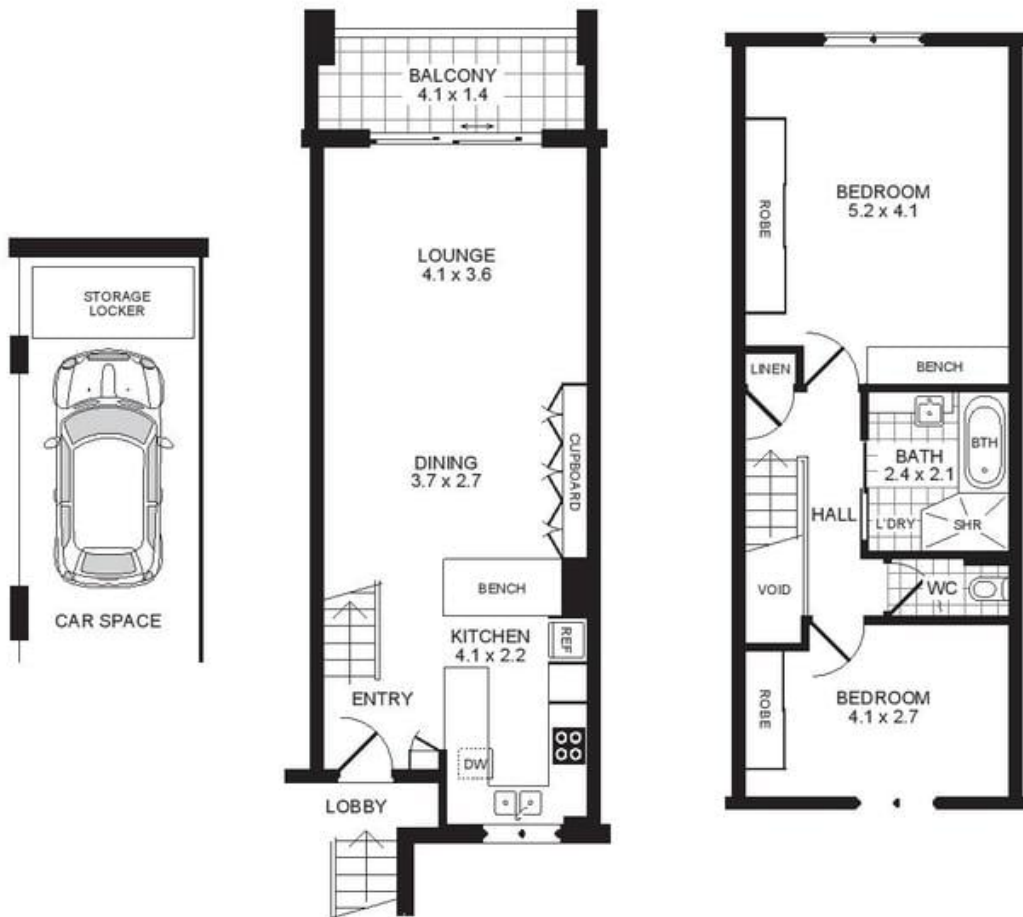
Jason Boon 0418 671 494

Geoff Cox 0418 231 004

Proudly Richardson&Wrench

Richardson & Wrench Elizabeth Bay / Potts Point
02 8356 2700

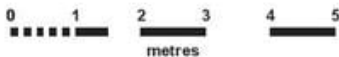
APARTMENT 7/95 VICTORIA STREET POTTS POINT



BASEMENT
Scale 1cm = 1m (approx)

LEVEL ONE
Scale 1cm = 1m (approx)

LEVEL TWO
Scale 1cm = 1m (approx)



PROMOPLANS ...adding REAL value!

E&OE This plan is for illustrative purposes only and dimensions are approximate. It does not constitute part of any legal document or commercial contract for the sale or lease of this property.

COPYRIGHT © 2013 PROMOPLANS 02 9572 7111
Warning: Usage restricted under the Copyright Act

Contact

Jason Boon
Phone: 8356 2700 Mobile: 0418 671 494
Email: jboon@rwebay.com.au

Geoff Cox
Phone: 8356 2734 Mobile: 0418 231 004
Email: gcox@rwebay.com.au

R&W

Elizabeth Bay | Potts Point
8356 2700