



## 19/20 Macleay Street POTTS POINT, NSW

2 bed | 1 bath

Quietly set well back from the buzzing lifestyle in the heart of uber-hip Potts Point, this bright and airy apartment offers an ideal layout with broad appeal and sparkling blue cameo-views up the Harbour to the Heads. Occupying the best position on the first floor of Twenty, a recently renovated grand classic Art Deco security block, this north-east corner apartment offers quality and style in an affordable price range. Enviably located near the northern end of tree-lined Macleay Street, this tightly held landmark building has cafes, shops, supermarkets, parks and transport choices just metres from the door, whilst Woolloomooloo Bay restaurants and Sydney CBD attractions are all only minutes away.

...

# R&W

[rwebay.com.au/1543256](http://rwebay.com.au/1543256)

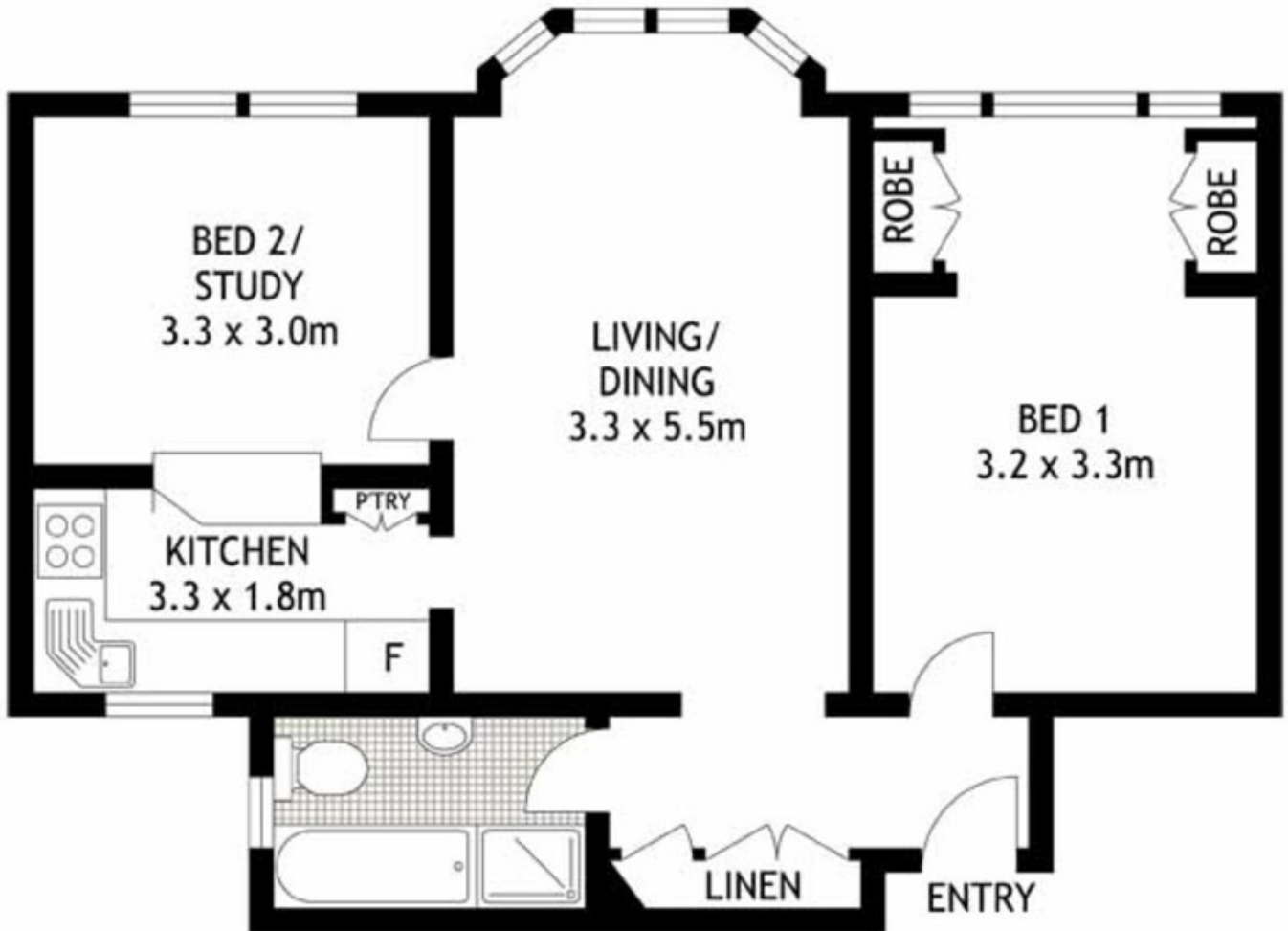
Greg McKinley 0412 044 822

Andrew Hoggett 0412 208 614

Luke McDonnell 0418 844 110

**Proudly Richardson&Wrench**

Richardson & Wrench Elizabeth Bay / Potts Point  
02 8356 2700



LEVEL ONE



19/20 MACLEAY STREET

POTTS POINT

SCAPE Floor Planing Disclaimer: This floor plan is conceptual only. It is provided for illustrative purposes only and should not be relied upon. We make no guarantees to the correctness of this plan. All interested parties should make and rely on their own enquiries in determining the accuracy of the information contained in this floor plan.

**R&W** Elizabeth Bay  
Potts Point