



6/38-40 Kings Cross Road POTTS POINT, NSW

1 bed | 1 bath

R&W

Enjoy as is or add your creative flair to maximise the comfortable layout of this remarkable 1-bedroom apartment. Quietly first floor positioned in a well maintained classic c.1920's security strata block of 12, this character-filled gem offers old-world charm with great potential for a chic contemporary renovation. Set in a sought after locale bordering the trendy precincts of Potts Point, Elizabeth Bay and Rushcutters Bay, it's an easy stroll to cafes, shops, supermarkets, train station, express buses, numerous parks and the harbour foreshore. Also just minutes to the CBD, this apartment is an ideal first home or investment.

...

rwebay.com.au/1606742

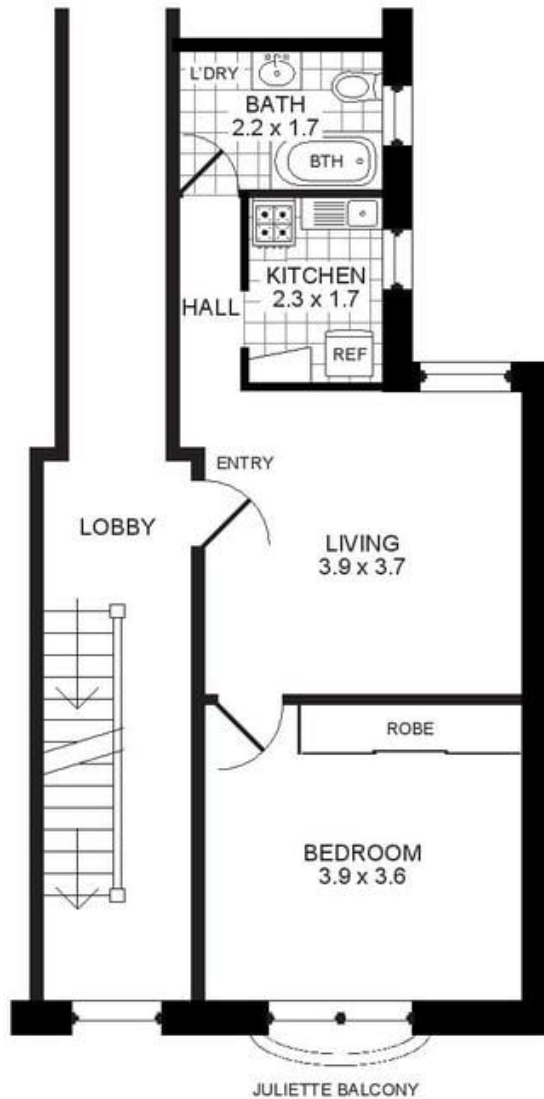
Geoff Cox 0418 231 004

Jason Boon 0418 671 494

Proudly Richardson&Wrench

Richardson & Wrench Elizabeth Bay / Potts Point
02 8356 2700

APARTMENT 6/38-40 KINGS CROSS ROAD
POTTS POINT



FLOOR PLAN



PROMOPLANS ...adding REAL value!

E&OE This plan is for illustrative purposes only and dimensions are approximate. It does not constitute part of any legal document or commercial contract for the sale or lease of this property.

COPYRIGHT © 2013 PROMOPLANS 02 9572 7111

Warning: Usage restricted under the Copyright Act

Contact

Jason Boon

Phone: 8356 2700 Mobile: 0418 671 494

Email: jboon@rwebay.com.au

Geoff Cox

Phone: 8356 2734 Mobile: 0418 231 004

Email: gcox@rwebay.com.au

R&W

Elizabeth Bay / Potts Point
8356 2700