



3/15 St Neot Ave POTTS POINT, NSW

3 bed | 1 bath | 1 car

- * Large open plan living room, central entry foyer
- * Adjoining separate dining room or sunroom/study with limestone floor
- * CaesarStone contemporary European kitchen with sunny balcony, st/steel gas stove, dishwasher, soft close drawers
- * 3 generous bedrooms, bay-fronted huge master bedroom with window-seat and open plan study area
- * Marble contemporary designer bathroom, quality fittings, heated towel rails

R&W

rwebay.com.au/1628376

Luke McDonnell 0418 844 110

Angelo Bouras 0401 658 653

Jason Boon 0418 671 494

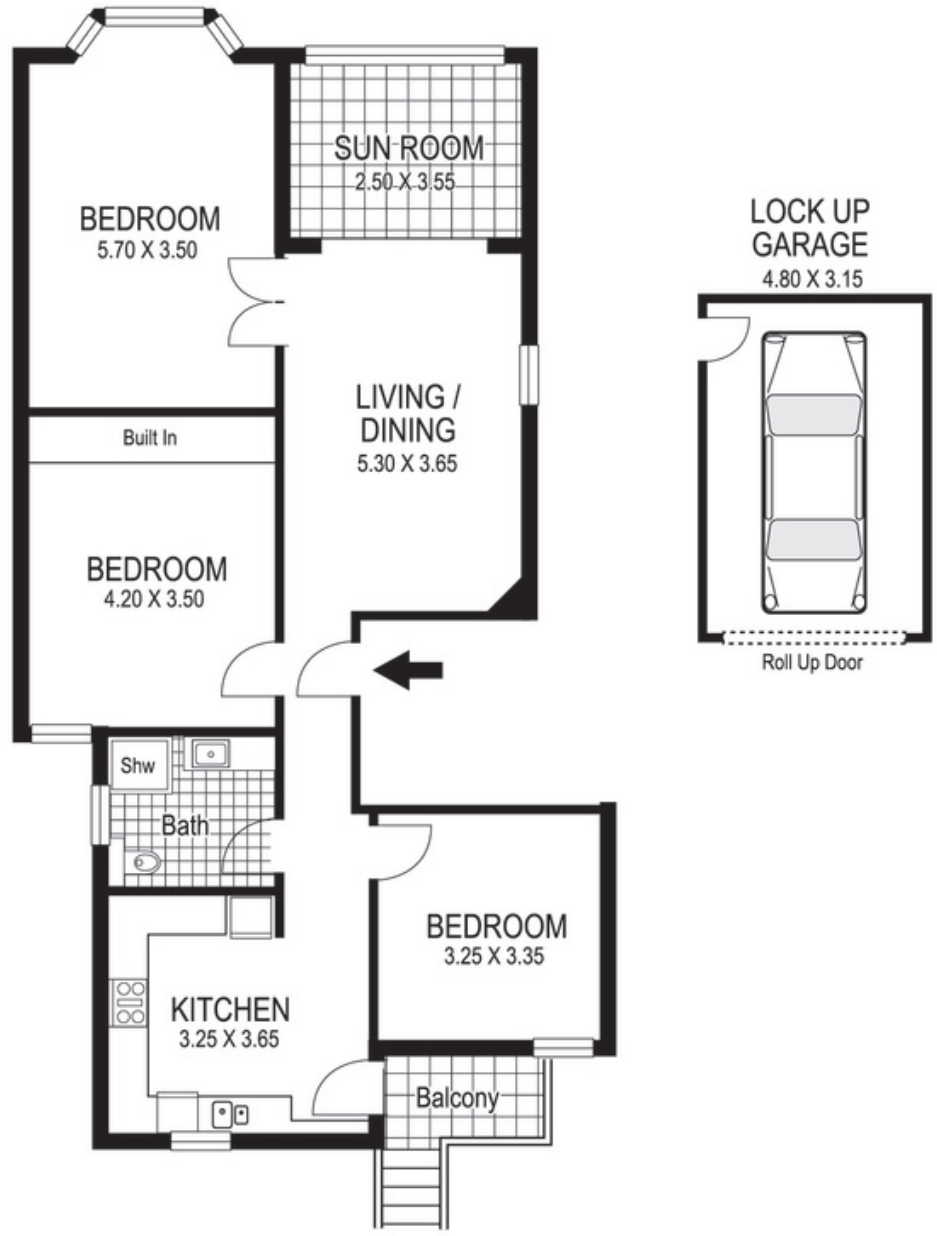
Proudly Richardson&Wrench

Richardson & Wrench Elizabeth Bay / Potts Point
02 8356 2700

R&W | The best reputation
in real estate
Elizabeth Bay/Potts Point

Contact:
Luke McDonnell
0418 844 110

Contact:
Angelo Bouras
0401 658 653



**3 / 15 St Neot Avenue
POTTS POINT**

Plans shown are for presentation purposes only and are not part of any legal document or title and are subject to errors, omissions, inaccuracies and they should not be used as sole and/or accurate reference for purchasing decision. Interested parties should make their own enquiries using other sources supplied. Dimensions shown on the plans are approximate values in length by width. Illustration by Raoul Isidro 04111 28500.

Every precaution has been taken to establish accuracy of the information in this brochure but does not constitute any representation by the vendor or agent.

