



## 14/40a-42 Macleay Street POTTS POINT, NSW

3 bed | 1.5 bath | 1 car

**R&W**

- \* House sized apartment separates living areas from the private wing
- \* Open dining room adjoins large open living room, bespoke credenza
- \* Private alfresco dining verandah feels like an indoor/outdoor room
- \* Eat in marble kitchen with live gas hob, brand new Miele oven, Asko dishwasher, integrated fridge, lots of streamlined timber cupboards and soft close drawers

[rwebay.com.au/1644329](http://rwebay.com.au/1644329)

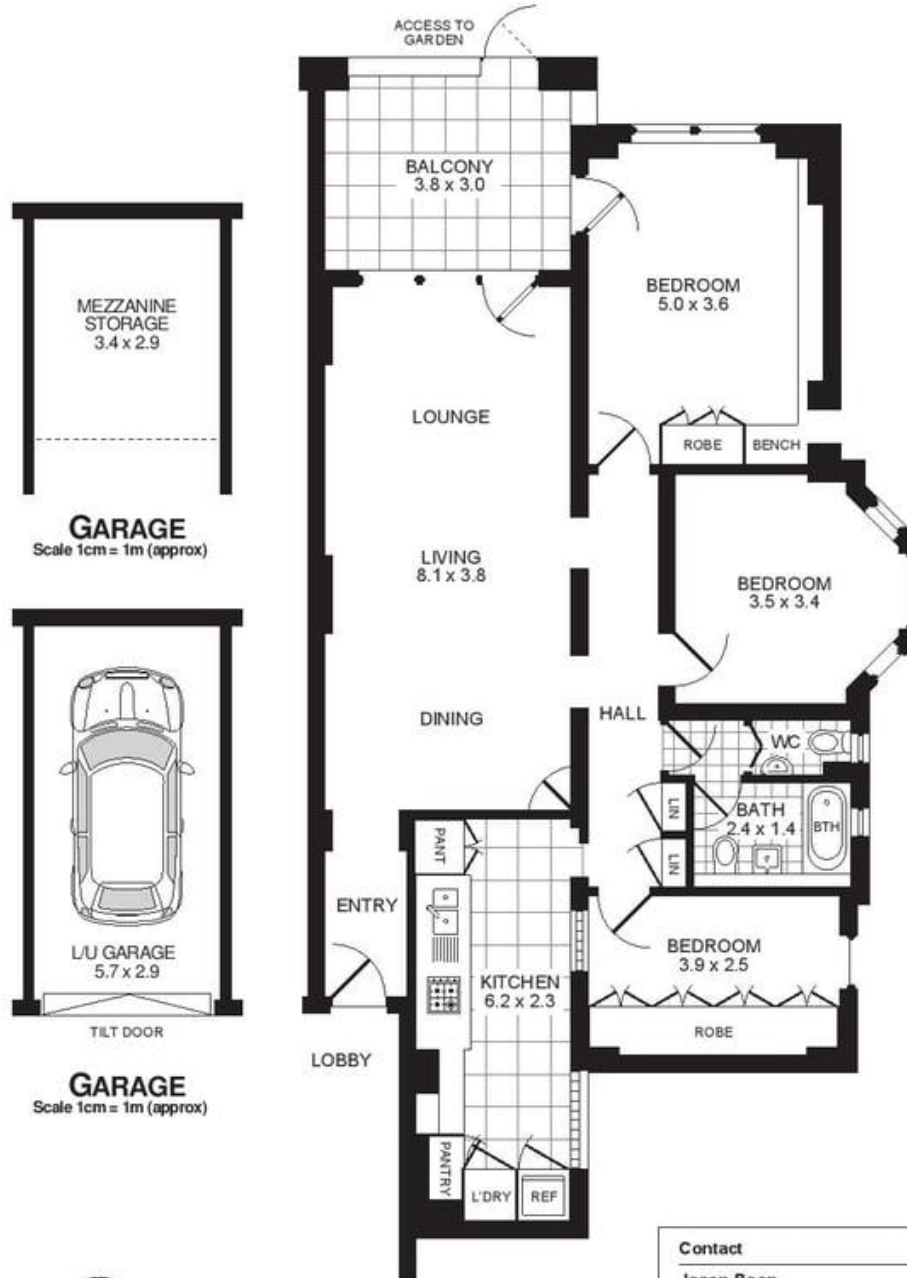
Jason Boon 0418 671 494

Geoff Cox 0418 231 004

**Proudly Richardson&Wrench**

Richardson & Wrench Elizabeth Bay / Potts Point  
02 8356 2700

# APARTMENT 14/40A MACLEAY STREET POTTS POINT



**GARAGE**  
Scale 1cm = 1m (approx)

**GARAGE**  
Scale 1cm = 1m (approx)

**FLOOR PLAN**  
Scale 1cm = 1m (approx)

**Contact**

**Jason Boon**  
Phone: 8356 2700 Mobile: 0418 671 494  
Email: jboon@rwebay.com.au  
**Geoff Cox**  
Phone: 8356 2734 Mobile: 0418 231 004  
Email: gcox@rwebay.com.au



**PROMOPLANS ...adding REAL value!**

ES&CE This plan is for illustrative purposes only and dimensions are approximate. It does not constitute part of any legal document or commercial contract for the sale or lease of this property.  
COPYRIGHT © 2013 PROMOPLANS 02 9572 7111  
Warning: Usage restricted under the Copyright Act

**R&W**  
Elizabeth Bay | Potts Point  
8356 2700