



## 37/117 Macleay Street POTTS POINT, NSW

1 bed | 1 bath

- Level entrance, paneled lifts, stunning double height security lobby
- Spacious open plan living and dining areas, 2 built-in cupboards
- King size bedroom, sleek built-in wardrobes, drawers, window seat
- Stunning bathroom, extra large rain shower head, Lefroy Brooks tapware, glass mosaic tiled floor, glossy subway tiled walls
- Custom built kitchen features st/steel benchtop, gas ...

# R&W

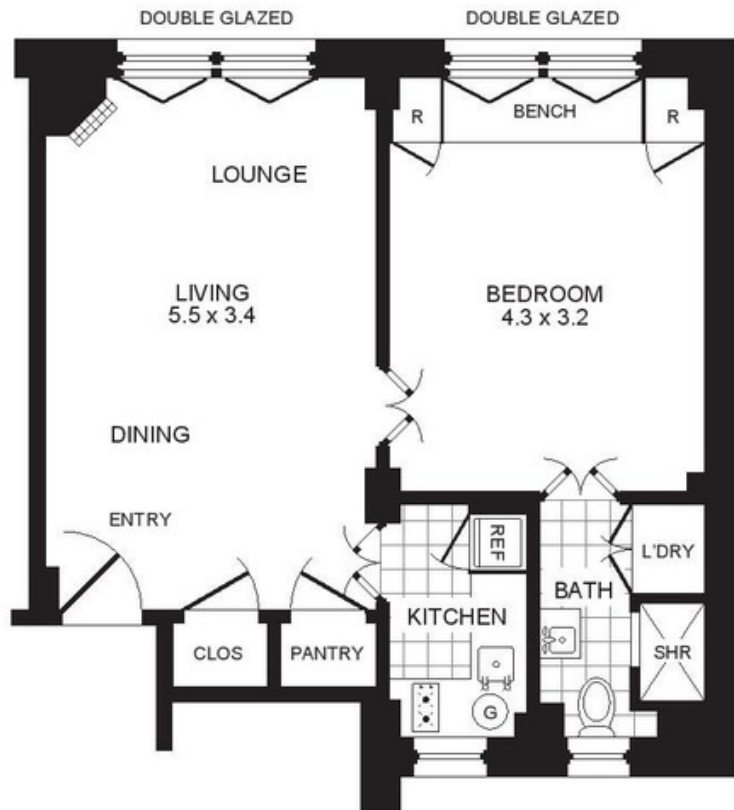
[rwebay.com.au/1648777](http://rwebay.com.au/1648777)

R&W Elizabeth Bay Potts Point

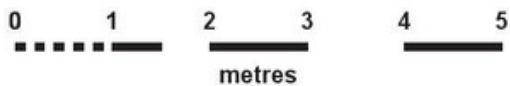
**Proudly Richardson&Wrench**

Richardson & Wrench Elizabeth Bay / Potts Point  
02 8356 2700

APARTMENT 37/117 MACLEAY STREET  
POTTS POINT



FLOOR PLAN



**PROMOPLANS ...adding REAL value!**

E&OE This plan is for illustrative purposes only and dimensions are approximate. It does not constitute part of any legal document or commercial contract for the sale or lease of this property.  
COPYRIGHT © 2014 PROMOPLANS 02 9572 7111  
Warning: Usage restricted under the Copyright Act

CONTACT:

John Hoggett  
Phone 8356 2700 Mobile 0431 411 004  
Email jhoggett@rwebay.com.au

**R&W**

Elizabeth Bay | Potts Point  
8356 2700